

The Merthyr Tydfil
Local Development Plan
2006-2021
Proposals Map 1
Northern Sector (West)

Adopted 25th May 2011

Town Planning Manager
Merthyr Tydfil County Borough Council
Ty Kair Hardie
Riverside Court
Merthyr Tydfil
CF47 8XF

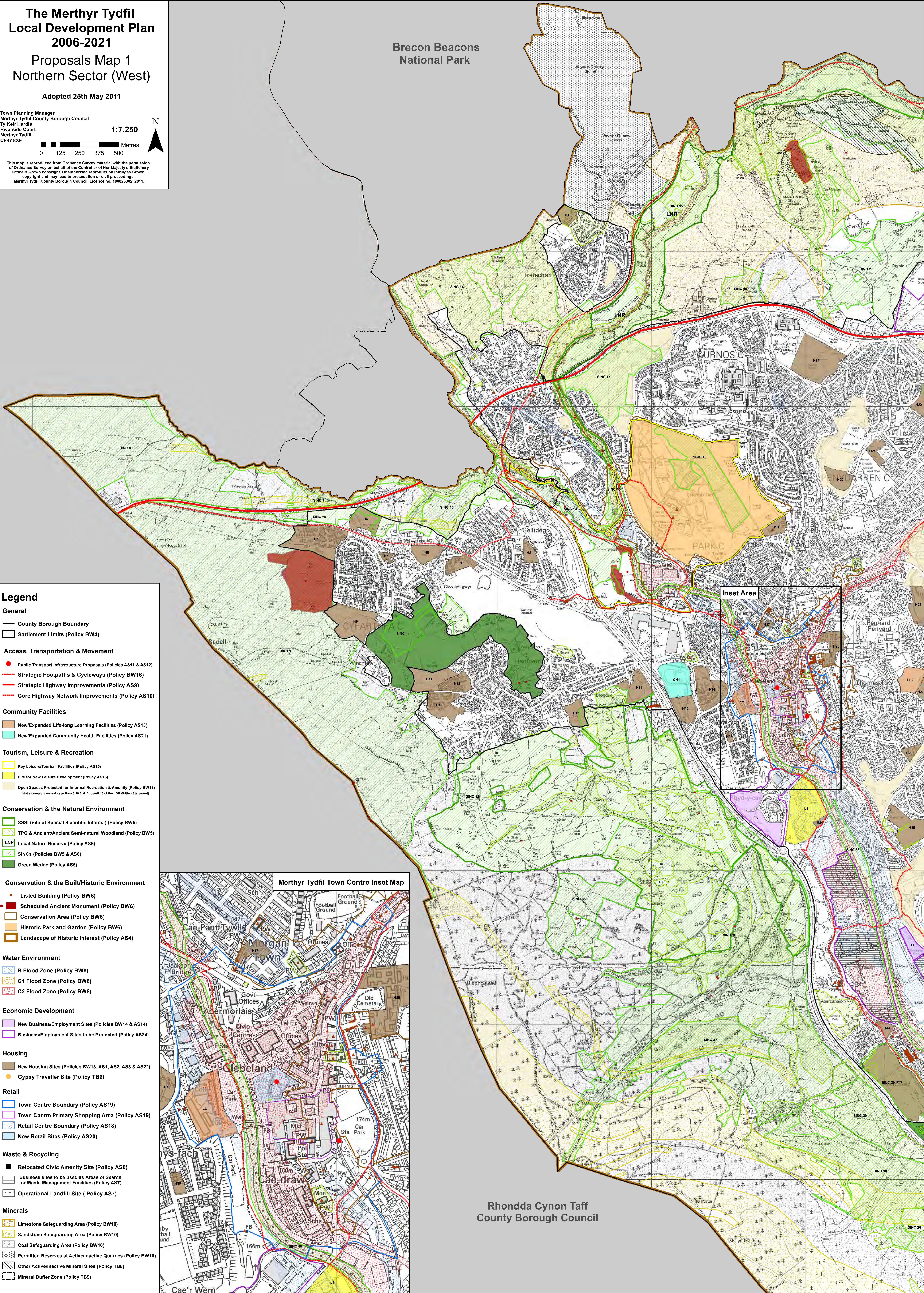
1:7,250

0 125 250 375 500 Metres



This map is reproduced from Ordnance Survey material with the permission of Ordnance Survey on behalf of the Controller of Her Majesty's Stationery Office © Crown copyright. Unauthorised reproduction infringes Crown copyright and may lead to prosecution or civil proceedings.
Merthyr Tydfil County Borough Council. Licence no. 100025302. 2011.

Brecon Beacons
National Park



Legend

General

- County Borough Boundary
- Settlement Limits (Policy BW4)

Access, Transportation & Movement

- Public Transport Infrastructure Proposals (Policies AS11 & AS12)
- Strategic Footpaths & Cycleways (Policy BW16)
- Strategic Highway Improvements (Policy AS9)
- Core Highway Network Improvements (Policy AS10)

Community Facilities

- New/Expanded Life-long Learning Facilities (Policy AS13)
- New/Expanded Community Health Facilities (Policy AS21)

Tourism, Leisure & Recreation

- Key Leisure/Tourism Facilities (Policy AS15)
 - Site for New Leisure Development (Policy AS16)
 - Open Spaces Protected for Informal Recreation & Amenity (Policy BW16)
- (Not a complete record - see Para 3.16.5. & Appendix 6 of the LDP Written Statement)

Conservation & the Natural Environment

- SSSI (Site of Special Scientific Interest) (Policy BW5)
- TPO & Ancient/Ancient Semi-natural Woodland (Policy BW5)
- LNR Local Nature Reserve (Policy AS6)
- SINCs (Policies BW5 & AS6)
- Green Wedge (Policy AS5)

Conservation & the Built/Historic Environment

- Listed Building (Policy BW6)
- Scheduled Ancient Monument (Policy BW6)
- Conservation Area (Policy BW6)
- Historic Park and Garden (Policy BW6)
- Landscape of Historic Interest (Policy AS4)

Water Environment

- B Flood Zone (Policy BW8)
- C1 Flood Zone (Policy BW8)
- C2 Flood Zone (Policy BW8)

Economic Development

- New Business/Employment Sites (Policies BW14 & AS14)
- Business/Employment Sites to be Protected (Policy AS24)

Housing

- New Housing Sites (Policies BW13, AS1, AS2, AS3 & AS22)
- Gypsy Traveller Site (Policy TB6)

Retail

- Town Centre Boundary (Policy AS19)
- Town Centre Primary Shopping Area (Policy AS19)
- Retail Centre Boundary (Policy AS18)
- New Retail Sites (Policy AS20)

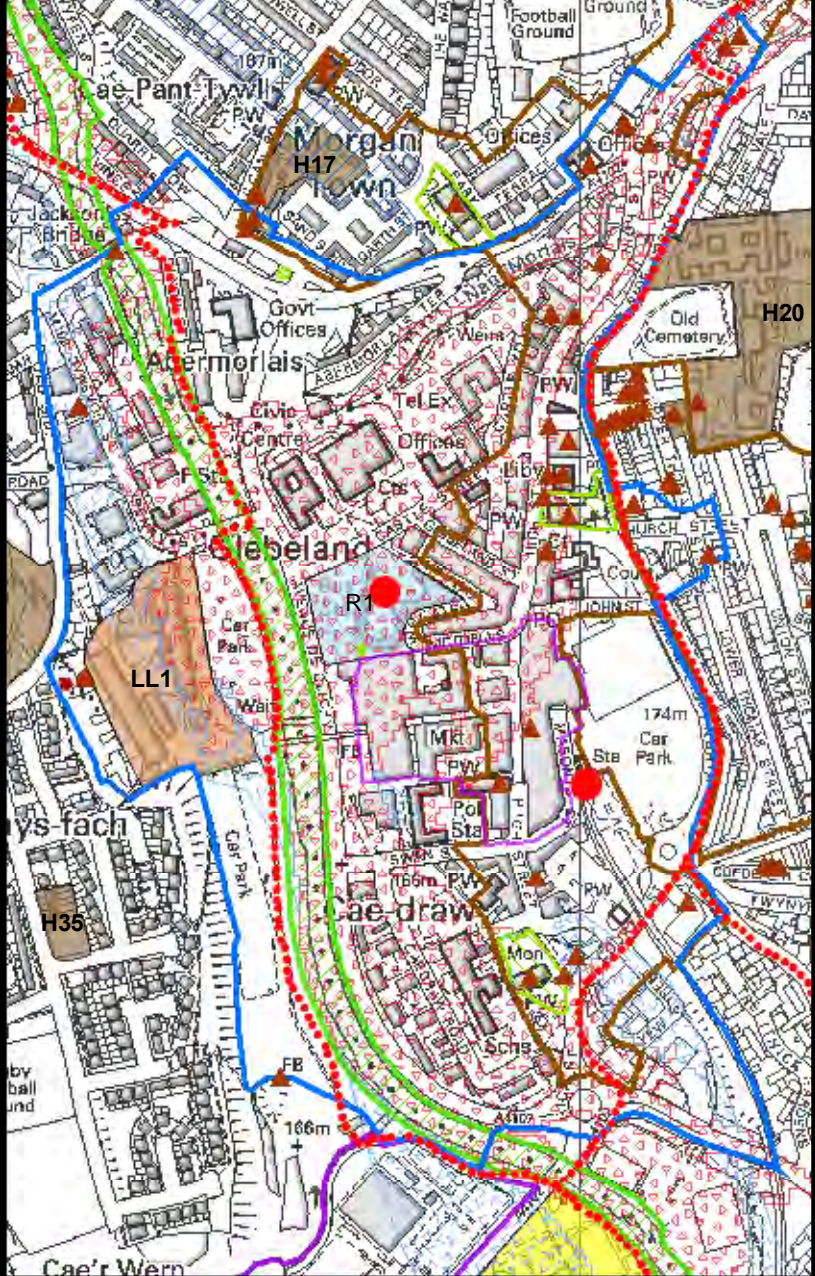
Waste & Recycling

- Relocated Civic Amenity Site (Policy AS8)
- Business sites to be used as Areas of Search for Waste Management Facilities (Policy AS7)
- Operational Landfill Site (Policy AS7)

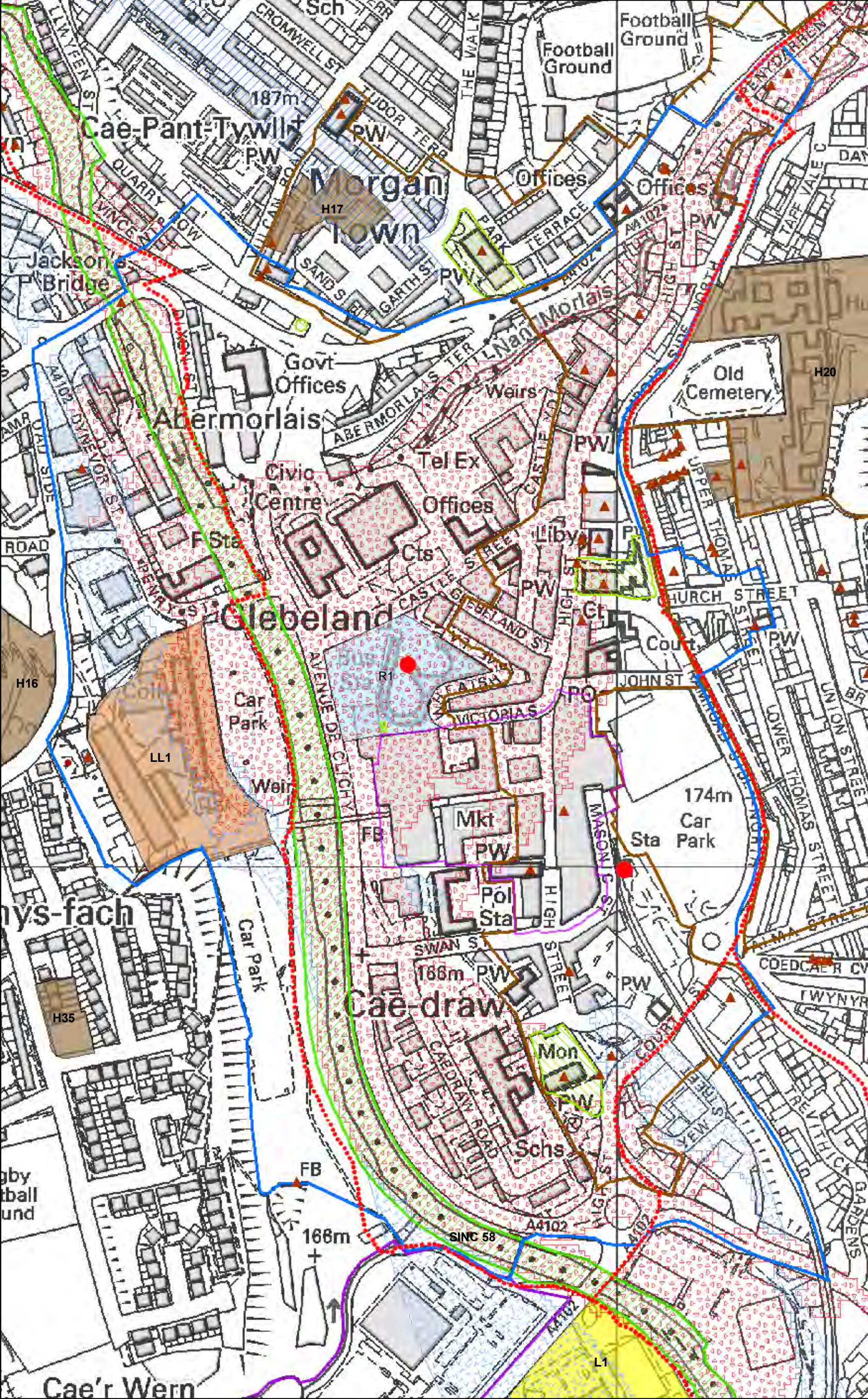
Minerals

- Limestone Safeguarding Area (Policy BW10)
- Sandstone Safeguarding Area (Policy BW10)
- Coal Safeguarding Area (Policy BW10)
- Permitted Reserves at Active/Inactive Quarries (Policy BW10)
- Other Active/Inactive Mineral Sites (Policy TB8)
- Mineral Buffer Zone (Policy TB9)

Inset Area



Merthyr Tydfil Town Centre Inset Map



Rhondda Cynon Taff
County Borough Council