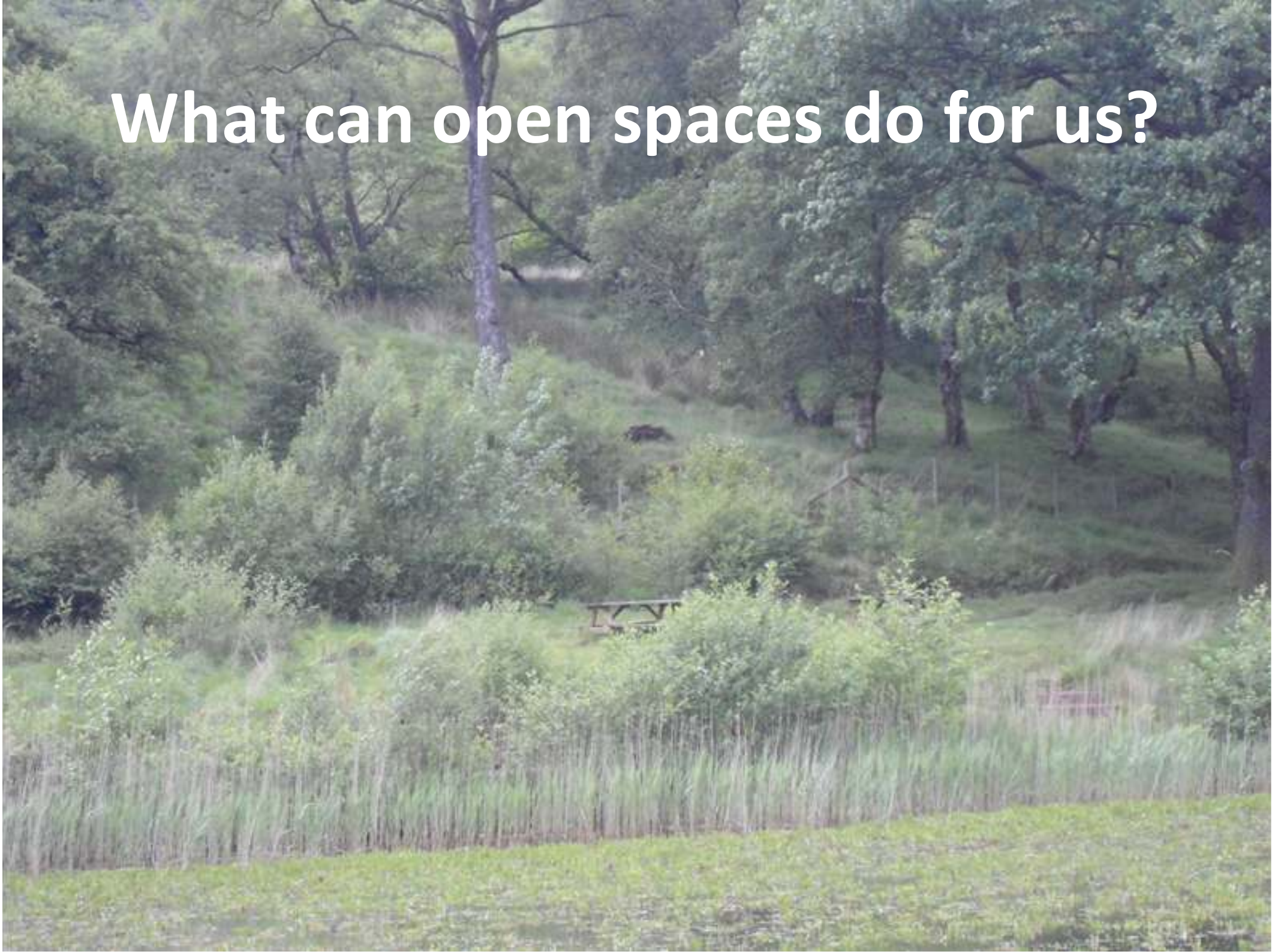




Your Space

Introducing
Merthyr Tydfil Open Space Strategy

What can open spaces do for us?



Reinforce identity and civic pride



Shape existing and future development



**Improve physical and social inclusion
including accessibility**



A photograph of a person riding a bicycle on a dirt path in a wooded area. In the foreground, a large, moss-covered rock features a sculpture of a lizard. The text is overlaid on the image.

**Provide connected routes
between places for wildlife,
recreation walking and cycling
and safer routes to schools**

A photograph of a modern outdoor boardwalk. The boardwalk is made of dark wooden planks and leads to a circular area of yellow sand. It is bordered by a dark metal fence with horizontal slats. The background is filled with lush green trees and a clear blue sky. A tall light pole is visible in the distance.

**Provide green infrastructure and
ecosystem services**

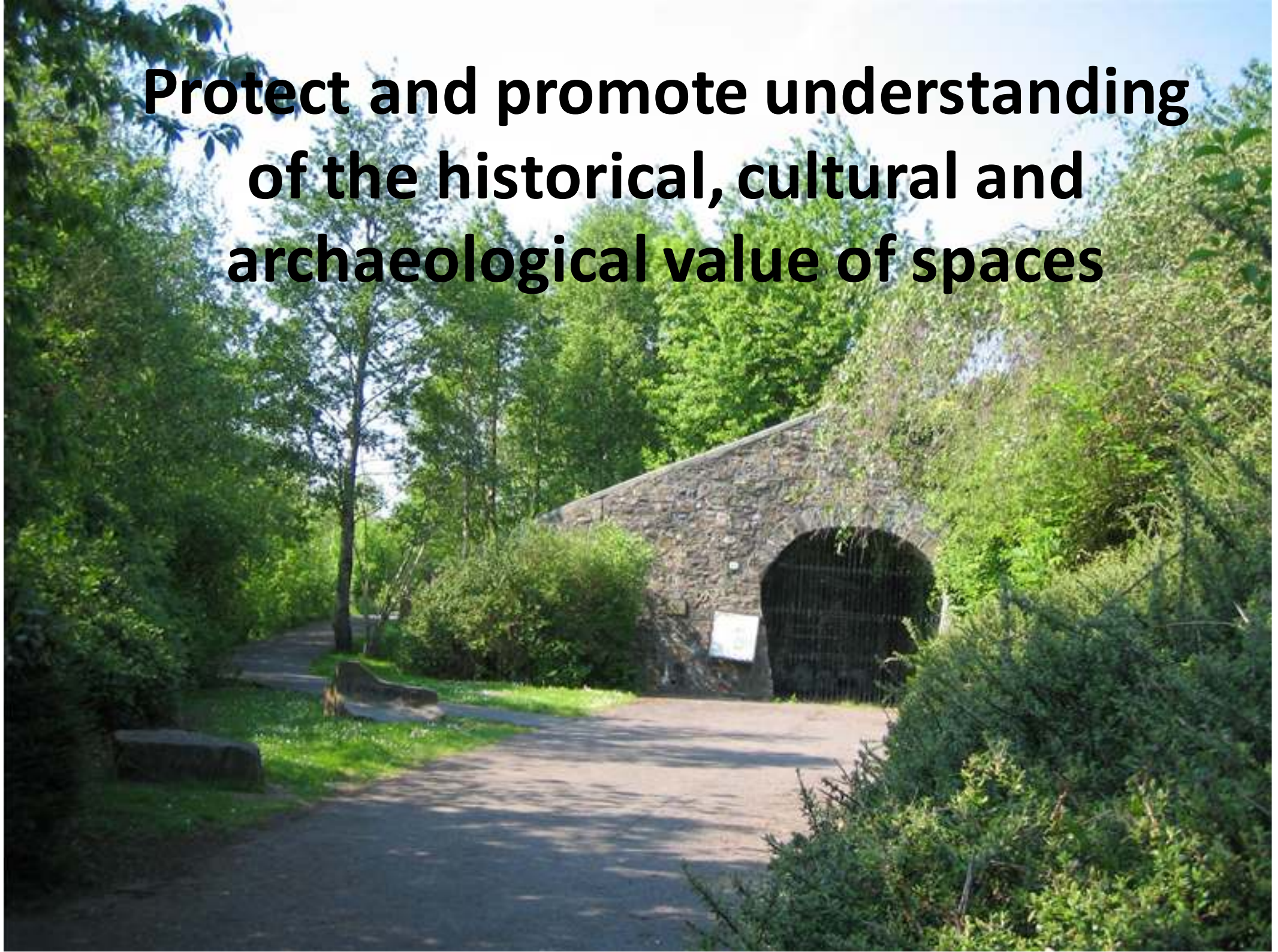
Protect and enhance biodiversity and ecological habitats



Raise property values and aid urban regeneration



**Protect and promote understanding
of the historical, cultural and
archaeological value of spaces**



**Boost the economic potential of
tourism, leisure and cultural facilities**



**Provide cultural, social, recreational,
sporting and community facilities**



**Protect and enhance biodiversity and
ecological habitats**



Contribute to the creation of healthy places, including quiet areas



**Provide for children and young
peoples play and recreation**



A group of people are engaged in a hands-on activity in a wooded area. In the background, several individuals are working with a large pile of cut branches and logs. Two people are wearing bright yellow high-visibility jackets. In the foreground, a person in a green jacket and brown boots is looking towards the camera, while two others in green and red jackets are looking down. The scene is set in a natural, wooded environment with bare trees and a clear sky.

Provide educational opportunities

Promote opportunities for local food production



A scenic landscape featuring a gravel path in the foreground, a wooden fence, and a thatched roof. The background shows rolling hills under a blue sky with white clouds. A bush with yellow flowers is on the left.

Help mitigate and adapt to climate change

**Improve opportunities to enjoy
contact with the natural world**



**The Open Space Strategy has
three key themes and objectives
these are derived from National,
Regional and Local policies.....**

Health to improve the general health of the residents of the County Borough

Environment to maintain, enhance and promote the ecological and environmental assets of the County Borough

Economy to promote the economy and generation of wealth



**What kind of strategies and plans link
to open spaces?**

- **Local Development Plan**
- **Play strategies**
- **Regeneration strategies**
- **Health strategies**
- **Culture strategies**
- **Education strategies**
- **Crime and disorder strategies**
- **Local transport plans and strategies**
- **Climate change strategies**
- **Biodiversity strategies**
- **Equalities and access strategies**

A photograph of a rural landscape. In the foreground, there is a dirt path leading through tall grass and some small trees. To the left, there is a large, curved, white structure that looks like a greenhouse or a covered walkway. In the background, there is a large, green hill with some trees on top. The sky is blue with some white clouds. The text "What kind of Open Spaces have been identified as being able to help deliver the three key themes?" is overlaid in the center of the image.

What kind of Open Spaces have been identified as being able to help deliver the three key themes?

Allotments



Amenity Greenspace





Civic Spaces

A photograph of a tree-lined path covered in fallen autumn leaves, leading into a wooded area. The path is wide and stretches from the foreground into the distance, flanked by tall trees with dense green foliage. The ground is covered with a thick layer of brown and yellow fallen leaves. The lighting is soft, suggesting a slightly overcast day. The overall scene is peaceful and natural.

Green Leisure Corridors

Multifunctional Open Space



Natural / semi-natural Greenspace





Outdoor Sports Area / Pitches

Playspace Equipped for Children and Young People



Public Parks and Gardens



A large, mature evergreen tree stands prominently in the center of a lush green lawn. The tree's branches are dense and dark green, casting long shadows across the grass. In the background, several residential houses with red-tiled roofs are visible, partially obscured by other trees and shrubs. A few cars are parked on a street or driveway in the distance. The overall scene is bright and sunny, with vibrant green grass and clear blue sky.

**What have we found out so far about
our open spaces?**

The topography they occupy



The facilities that they offer



How accessible they are



How they are managed



How they are used

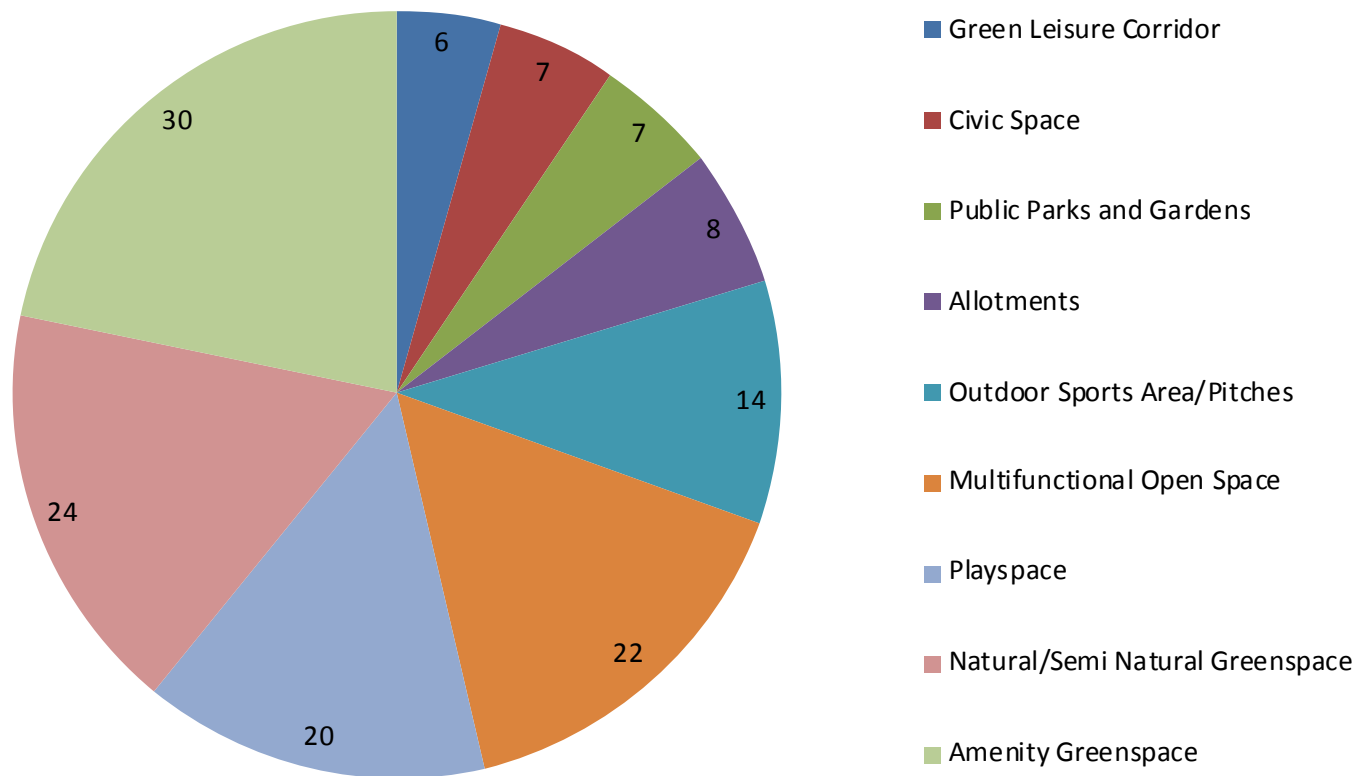


Opportunities they offer



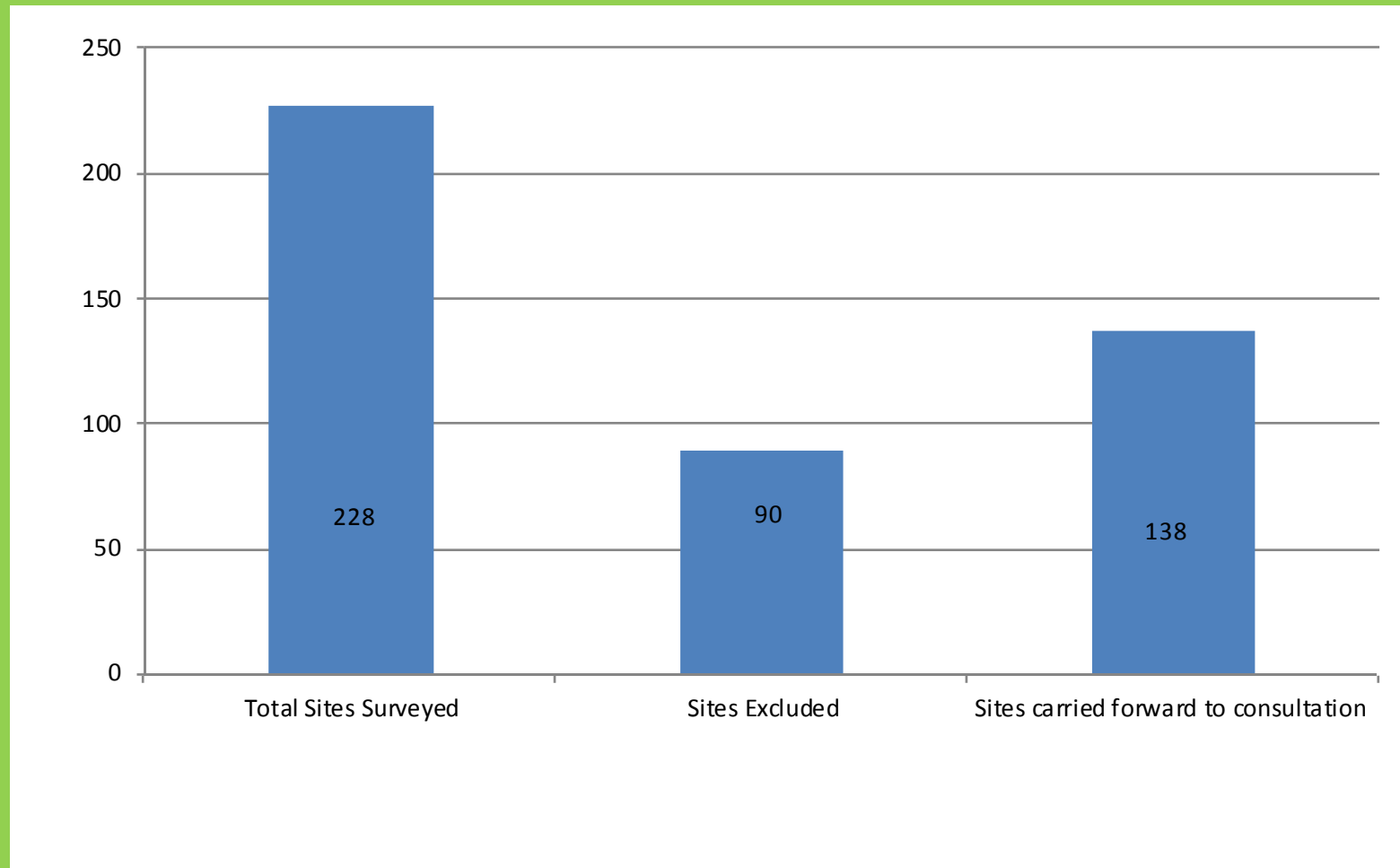
Composition

Number of open Spaces by typology



Sites Excluded

Number of open spaces





How have we looked at access?

Full Public Access

Entry to the site is possible without restrictions

Conditional Public Access

Public access exists, but subject to or affected by one or more restrictions

No Public Access

No physical right of access, only available to prescribed individuals and organisations



A photograph of a dense, overgrown landscape. The foreground is filled with tall, dry grasses and green weeds. In the middle ground, there are various shrubs and small trees, some with white flowers. The background is a dense forest of taller trees. The text "Other spaces we have not included and why" is overlaid in the center of the image.

**Other spaces we have not
included and why**

Cemeteries / Graveyards

Limited alternative uses due to formal set up of current use

Perception of such sites does not appeal to public for general recreational uses



The background of the slide is a photograph of a steep, forested valley side. The foreground is filled with dense green trees and foliage. In the background, a steep, grassy hillside rises up towards a cloudy sky. The overall scene is a natural, mountainous landscape.

Steep valley sides

Vast area of land with limited use due to gradient

Accessibility issues

Predominantly in private ownership

Predominantly used for upland grazing where gradient allows

Sports Club Facilities

Limited alternative uses due to formal set up of current use, e.g. some tennis, cricket, golf facilities

Access often restricted to members

Access restricted to opening hours

Fee often charged for use of facility



A photograph of a lush green field with yellow wildflowers, likely agricultural land. The field is filled with tall green grass and numerous small yellow flowers. In the background, there is a dense line of trees and shrubs. The text is overlaid on the left side of the image.

Agricultural land

Generally in private ownership

Limited opportunities due to existing use

A tall, cylindrical stone marker stands in a grassy field under a cloudy sky. The stone is weathered and has a rough texture. The field is covered in low-lying vegetation and scattered rocks. The sky is filled with soft, white clouds.

Common land

Limited ability for formal uses/ management

Commoners associations

Accessibility issues



School Playing Fields

No consistent approach across schools to availability of facilities to the public

Limited access outside of school hours

A photograph of a field of tall, green grass. In the center, a single, upright purple flower spike stands out. The text "What we would like to find out?" is overlaid in the middle of the image.

**What we would like to
find out?**

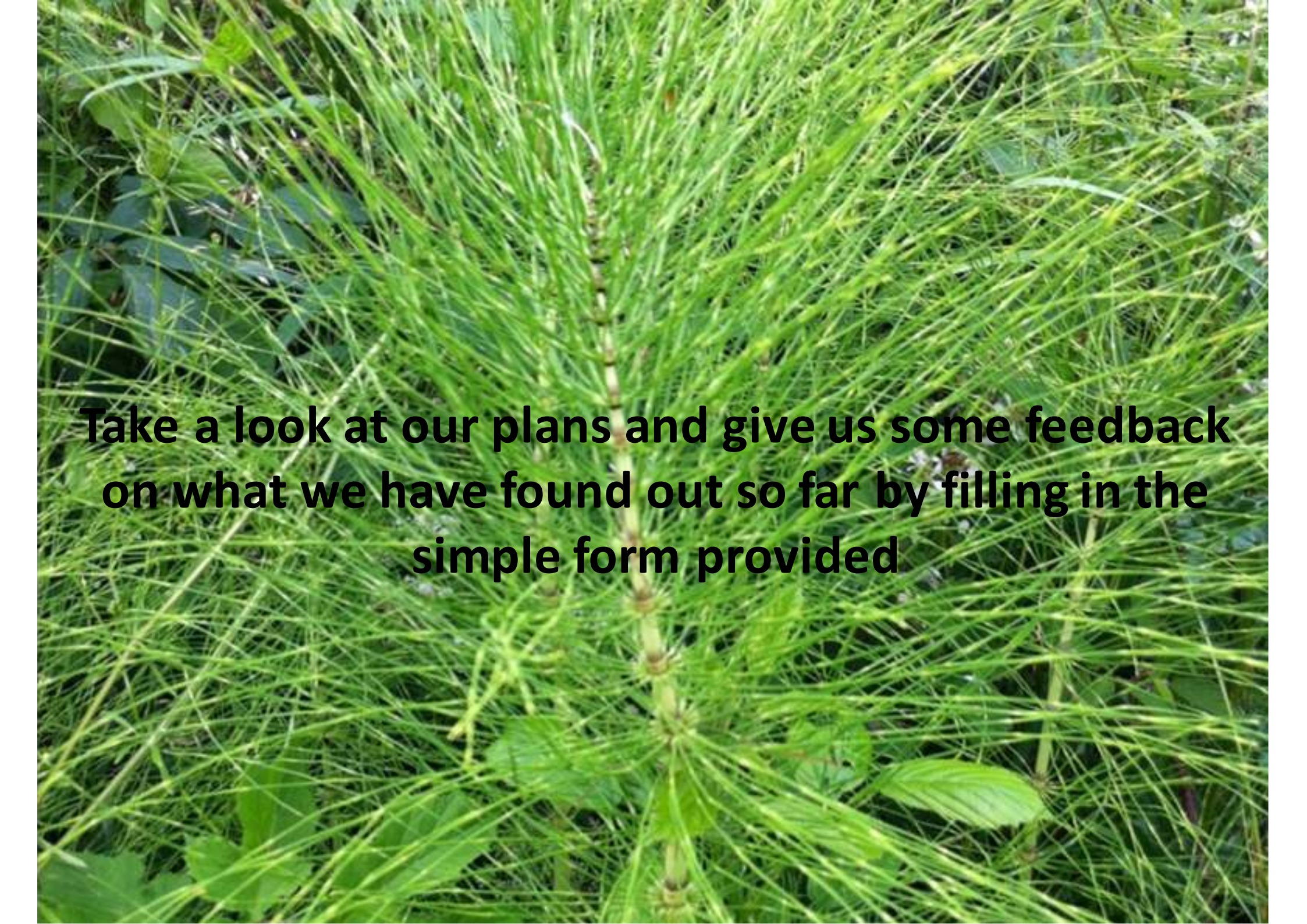


Why you would like to use a particular type of open space?

Why you would not like to use a particular type of open space?

Which type of open space you would be most likely to use?

Are there open spaces that you use but we have missed from our audit?

A close-up photograph of a dense field of tall, green grass. The grass blades are long and thin, creating a textured, layered appearance. A single stalk is prominently featured in the center, running vertically through the frame. The background is filled with more grass, creating a sense of depth and abundance. The lighting is bright, highlighting the vibrant green color of the foliage.

**Take a look at our plans and give us some feedback
on what we have found out so far by filling in the
simple form provided**



Thank you very much
yourspace@merthyr.gov.uk

Merthyr Tydfil County Borough Council would like to gratefully acknowledge that certain photographs in this presentation were supplied courtesy of Merthyr Camera Club