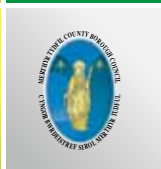




Merthyr Tydfil
14-19 Learning
Pathways



Opportunities at 14+

14-19 Learning Pathways 2012





14-19 Learning Pathways

Your 14-19 Learning Pathway will consist of one day attendance in the vocational pathway of your choice, either in college or with a training provider, and the remainder of the week in school. The qualifications offered are at entry level and level 1. The courses will start in September 2012.

Learning Providers

The courses will be by the following Learning Providers:

- ***Merthyr Tydfil College***
Ynysfach, Merthyr Tydfil, CF48 1AR
Tel: 01685 726010
- ***Neighbourhood Learning Centre (NLC)***
17-20 Pen-y-dre, Gurnos, Merthyr Tydfil CF47 9DY
Tel: 01685 727072
- ***Auto Project***
Aberfan & Merthyr Vale Youth & Community Project,
Delacey Building, Goatmill Rd, Dowlais, Merthyr Tydfil
Tel: 01685 375535
- ***Bedlinog Construction Unit***
The Old Drift Mine, Trelewis, Treharris, Merthyr Tydfil
Tel: 01443 710907

Information and Taster Day

To help you decide what course is best for you, your school will arrange for you to attend an Information and Taster Day. Parents and Guardians are also welcome to attend.

- The Information Day will take place on Thursday 2nd February 2012 at Merthyr Tydfil College.
- The Taster Day will take place on Thursday 23rd February 2012 at Merthyr Tydfil College, Autoproject, Bedlinog Centre and Neighbourhood Learning Centre; it will be a whole day event, one taster session in the morning and another in the afternoon.

Information Day

The Information Day will give you and your parents/guardians, the opportunity to meet the tutors from all the Learning Providers and ask questions about the course. Careers Advisers will also be available on the day. At the end of the session, you will be given a form to complete. The form will ask you to make a decision on two courses that you are most interested in for a taster experience on the 23rd February 2012. You will be asked to make a first and second choice.

All completed forms must be handed in to the school before 8th February 2012.

If you are unable to make a choice, or would like more support to make a decision, please contact your school or Careers Adviser.

Taster Day

The taster session will be planned to provide a practical 'hands on' experience of the course. Protective equipment will be provided, but be prepared to get messy, especially for courses such as Construction, Motor Vehicle and Sport and Active Leisure Pathway. Please wear old clothing and suitable footwear, especially for the Sport and Active Leisure Pathway. A lunch will be provided.

Application Forms

Following the Taster Day, you will be asked to fill out an application form. All application forms must be handed back into school before 30th March 2012.

Careers Service

For further careers advice and guidance contact the school Careers Adviser or your nearest careers office, Careers Wales Mid Glamorgan and Powys, 27 High Street, Merthyr Tydfil
Tel: 01685 358180.

14-19 Learning Pathways Course Information



Method of assessment

You will be assessed through assignments and project work

Progression pathway

On successful completion of the course, you may want to consider:

- CACHE Foundation or Certificate in Child Care and Education.

For further information on progression pathways contact your School Careers Adviser or your nearest careers office, Careers Wales Mid Glamorgan and Powys, 27 High Street, Merthyr Tydfil. Tel: 01685 358180

CHILD CARE (Merthyr Tydfil College)

Qualification

The qualification offered is the BTEC Entry Award / Level 1 Award in Caring for Children

Course details

It is an introduction to childcare, education and play, providing an opportunity to develop basic skills in caring for children.

Skills and qualities

To be successful on the programme you will need to show that you enjoy meeting people and working with children, have patience and understanding. You must be a well motivated young person with good behaviour and attendance.



MOTOR VEHICLE (Merthyr Tydfil College & Autoproject)

Qualification

The qualification offered is the ABC Level 1 Certificate in Motor Vehicle Maintenance and Repair.

Course details

The programme is designed to meet the needs of those who wish to acquire the introductory knowledge and skills relevant to motor vehicle repair. Students will learn how to use equipment correctly, and gain basic knowledge and skills in various areas of motor vehicle repair. The overall aim is to provide both experience and knowledge on which to base future career or further education decisions, and to increase employment opportunities. There will be a special focus on health and safety.

Skills and qualities

To be successful on the programme you will need to show that you are able to listen to instructions, enjoy working on your own and in a team, do not mind getting dirty and working in cold conditions. As well as practical sessions in the workshop, the course includes classroom based theory work.

Method of assessment

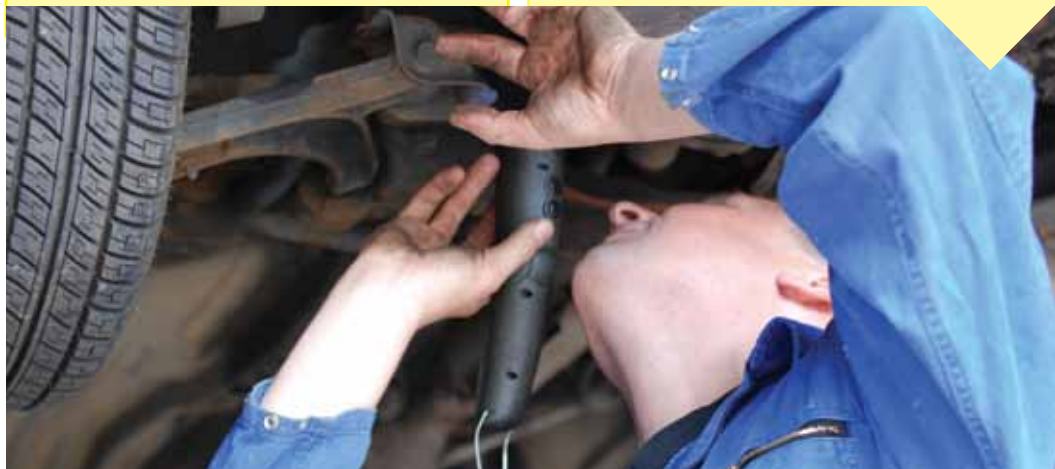
You will be assessed through assignments and project work.

Progression pathway

On successful completion of the course, you may want to consider:

- City and Guilds 3902 Motor Vehicle Foundation

For further information on progression pathways contact your School Careers Adviser or your nearest careers office, Careers Wales Mid Glamorgan and Powys, 27 High Street, Merthyr Tydfil. Tel: 01685 358180



HAIR & BEAUTY

(Neighbourhood Learning Centre)

Qualification

The qualification offered is Hair & Beauty Foundation Learning BTEC Entry 3.

Course details

You will gain a general introduction to the Hair & Beauty Sector, where you will learn the importance of presenting a professional image and communicating and behaving appropriately in a Salon environment. The course will help you to prepare basic skin care under supervision, and introduce you to shampooing and conditioning techniques and develop hairdressing skills including basic hair-plaiting.

Skills and qualities

To be successful on the programme you will need to show that you are able to listen to instructions, enjoy working with your hands, enjoy working in a team and talking to people. You must be a well motivated young person with good behaviour and attendance.

Method of assessment

You will be assessed through tutors observing you in a real salon environment, through your practical demonstrations and role play activities and also on the completion of the assignment booklet for each unit completed.

Progression pathway

On successful completion of the course, you may want to consider:

- VTCT Level 1 Certificate in Hair and Beauty
- NVQ Level 1

For further information on progression pathways contact your School Careers Adviser or your nearest careers office, Careers Wales Mid Glamorgan and Powys, 27 High Street, Merthyr Tydfil. Tel: 01685 358180



HAIR & BEAUTY

(Merthyr Tydfil College)

Qualification

The qualification offered is VTCT Level 1 Certificate in Hair & Beauty.

Course details

The course covers the knowledge and understanding of hairdressing and hair care practice, how to use equipment correctly, and safely, and developing customer care skills. Please note: You will not learn the skills of cutting hair on the course. These skills are taught at Level 2 or 3 and onwards.

Skills and qualities

To be successful on the programme you will need to show that you are able to listen to instructions, enjoy working with your hands, enjoy working in a team and talking to people. You must be a well motivated young person with good behaviour and attendance.

Method of assessment

You will be assessed through assignments, observations of practical work and on the Level 1 course an end of year exam.

Progression pathway

On successful completion of the course, you may want to consider:

- NVQ Level 1 or Level 2

For further information on progression pathways contact your School Careers Adviser or your nearest careers office, Careers Wales Mid Glamorgan and Powys, 27 High Street, Merthyr Tydfil. Tel: 01685 358180



CONSTRUCTION (Neighbourhood Learning Centre)

Qualification

The qualification offered is Construction Foundation Learning BTEC Entry 3 / Level 1.

Course details

The course will provide an introduction to the hand tools, materials, personal protective equipment and fixings used to develop skills in carpentry, basic brickwork, home improvement and manufacturing a product using timber and timber sheet materials.

Skills and qualities

To be successful on the programme you will need to show that you are able to listen to instructions, enjoy working on your own and in a team, do not mind getting dirty and working indoors/outdoor and in cold conditions. You must be a well motivated young person with good behaviour and attendance.

The method of assessment

You will be assessed by the tutor observing you in a construction simulated environment, through

your practical demonstrations and completion of an assignment booklet for each unit.

Progression pathway

On successful completion of the course, you may want to consider:

- NVQ Level 1 or Level 2 in related trades

For further information on progression pathways contact your School Careers Adviser or your nearest careers office, Careers Wales Mid Glamorgan and Powys, 27 High Street, Merthyr Tydfil
Tel: 01685 358180



CONSTRUCTION

(Bedlinog Construction Unit)

Qualification

The qualification offered is Level 1 ABC in Creating Interiors.

Course details

The course will provide an introduction to the hand tools, materials, personal protective equipment and fixings used to develop skills in a range of units including carpentry, joinery, brickwork, surface preparation, paint finishing and cabinet making. The units will incorporate the underpinning knowledge of health and safety throughout.

Skills and qualities

To be successful on the programme you will need to show that you are able to listen to instructions, enjoy working on your own and in a team, do not mind getting dirty

and working indoors/outdoor and in cold conditions. You must be a well motivated young person with good behaviour and attendance.

The method of assessment

You will be assessed by the tutor observing you in a construction simulated environment, through your practical demonstrations and completion of an assignment booklet for each unit.

Progression pathway

On successful completion of the course, you may want to consider:

- Level 2 in related trades

For further information on progression pathways contact your School Careers Adviser or your nearest careers office, Careers Wales Mid Glamorgan and Powys, 27 High Street, Merthyr Tydfil Tel: 01685 358180.



Sport and Active Leisure (Neighbourhood Learning Centre)

Qualifications

The qualification offered is Sport and Active Leisure Foundation Learning Entry 3/Level 1.

Course details

The course consists of five units which will cover the following; safe learning in the workplace, taking part in sport, improving own fitness, risks and hazards in sport and active leisure and working in sport and active leisure.

Skills and qualities

This course will suit all learning styles but may be more suitable for the hands on learner as the course aims to develop practical activities in sport and leisure; however each unit also seeks to develop the theoretical underpinning knowledge.

Method of assessment

You will be assessed by your tutor observing you in sport and leisure based activities, through your practical demonstrations and completion of the assignment booklets for each unit.

Progression pathway

On successful completion of the course, you may want to consider:

- Level 1 or 2 in Sport and Leisure

For further information on progression pathways contact your School Careers Adviser or your nearest careers office, Careers Wales Mid Glamorgan and Powys, 27 High Street, Merthyr Tydfil Tel: 01685 358180



ENGINEERING

(Merthyr Tydfil College)

Qualification

The qualification offered is the EAL Level 1 Performing Engineering Operations (PEO).

Course details

Students will learn how to use tools correctly and work with various hard and soft materials and computer software constructing models from job specifications and drawings. The units will incorporate the underpinning knowledge of Health and Safety throughout.

Skills and qualities

To be successful on the programme you will need to show that you are able to listen to instructions as you will be taught how to use large

and small pieces of machinery and tools, enjoy working on your own and in a team, enjoy working with your hands and do not mind getting dirty.

Method of assessment

You will be assessed through assignments and project work.

Progression pathway

On successful completion of the course, you may want to consider:

- NVQ Level 2 in Engineering.

For further information on progression pathways contact your School Careers Adviser or your nearest careers office, Careers Wales Mid Glamorgan and Powys, 27 High Street, Merthyr Tydfil. Tel: 01685 358180



Work Based Learning (Merthyr Tydfil College)

Qualification

The qualifications offered are NVQ / VRQ at Level 1 in the following routes:

- Customer Services
- Retail
- Business Administration
- Health and Social Care
- Hairdressing
- Mechanics

Course details

The qualification will provide a real work experience in your chosen route (see above) for one day a week. In some routes, you will also be expected to attend the college for one day a month to complete classroom / workshop based tasks.



Skills and qualities

An NVQ is recognised by employers as evidence of the ability to carry out a range of tasks related to the job role. As you will be with an employer for the majority of the course, you must be a well motivated young person with good behaviour, punctuality and attendance.

Method of assessment

NVQs are assessed at work or in a simulated workplace. For each unit your assessor watches and asks questions as you perform a task, or looks at a portfolio of work that you have built as formal evidence of your learning.

Progression pathway

On successful completion of the course, you may want to consider:

- Level 2 in your chosen NVQ route

For further information on progression pathways contact your School Careers Adviser or your nearest careers office, Careers Wales Mid Glamorgan and Powys, 27 High Street, Merthyr Tydfil. Tel: 01685 358180



For further information

Careers Service

For further careers advice and guidance contact the school Careers Adviser or your nearest careers office, Careers Wales Mid Glamorgan and Powys, 27 High Street, Merthyr Tydfil
Tel: 01685 358180.

Schools

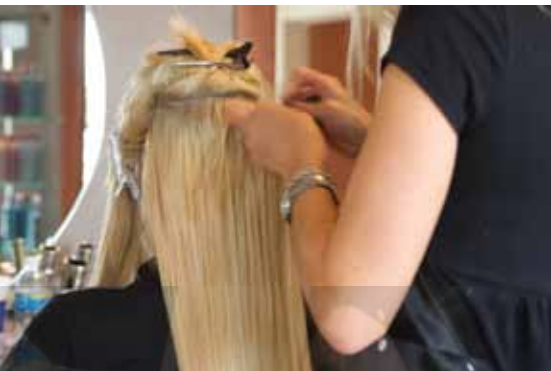
Howard Bevan, Vocational Co-ordinator, Afon Taf High School.
Tel: 01443 690401

John Davies, Vocational Co-ordinator, Pen-y-dre High School,
Tel: 01685 721726

Bev Davies, Vocational Co-ordinator, Cyfarthfa High School,
Tel: 01685 721725

Glenys Jones, Vocational Co-ordinator, Bishop Hedley High School,
Tel: 01685 721747





14-19 Learning Pathways

Lauren Penny, Pre 16 Network Support Officer

Merthyr Tydfil 14-19 Learning Pathways

MTCBC

Ty Keir Hardie

Riverside Court

Avenue De Clinchy

Merthyr Tydfil

CF47 8XE

Tel: 01685 727314

Brochure Format

If you require this brochure in another format, please contact:

Lauren Penny, Network Support Officer Tel: 01685 727314



This document was designed by Print and Graphic Design Section,
Merthyr Tydfil County Borough Council,
Customer Services Directorate,
Civic Centre,
Castle Street,
Merthyr Tydfil

