



## **Merthyr Tydfil County Borough Council**

### **Directorate of Place and Transformation**

#### **Neighbourhood Services - Highways**

#### **Winter Service Policy**

**2018 – 2019**

**Issue 1.3**

**INDEX**

<b>Description</b>	<b>Page No.</b>
Introduction	3
Background	3
Aim	3
Personnel	3
Emergency Planning	4
Road Damage Reporting	4
Third Party Claims	4
Weather Forecasts	4
Level of Service	6
Specification for Winter Maintenance Services	7
Highway Services Section	
Supply of Operatives.	
Supply of Drivers.	
Supply of Plant.	
Storage of Salt.	
Salt Bins.	
Response Times.	
Precautionary Salting.	
Decision Making Process to determine the necessary daily Action for Precautionary Salting only.	
Snow Clearing.	
Recommended Rates of Salt Spread other than for Precautionary Salting.	
Closure of Roads.	
Treatment of Footways.	
Damage to Property.	
Action when Thaw Comes.	
Appendix A - Precautionary Salting Routes	13
Appendix B - Location of Grit Bins	19
Appendix C - Third Party Claims	25
Appendix D – Street/Footway list for Whiteout Situation	27

## **Introduction**

Merthyr Tydfil County Borough Council, as Highway Authority, is responsible for snow clearing and precautionary salting of the County Highways within the Merthyr Tydfil County Borough area.

## **Background**

Section 41 of the Highways Act 1980 places a statutory duty on the Highway Authority to maintain the highway, as follows:-

***“(1A) In particular, a Highway Authority is under a duty to ensure, so far as is reasonably practicable, that a safe passage along a highway is not endangered by snow or ice”***

The legislation does not impose an absolute duty but rather involves a balance between the degree of risk and the steps necessary to eliminate the risk.

In order to provide a statutory defence, a County Policy on Winter Services is required. This Winter Service Document forms part of that said Policy and should be reviewed on a regular basis.

The level of service for County Roads is based on a risk assessment approach to determining a cost effective hierarchy of routes and treatments. The Authority believes that the level of service meets the requirements on the current interpretation of **“reasonably practicable”** but will continue to keep service provision under review, particularly in respect of any legal judgements. A review of the Winter Service operations is undertaken each year at the end of the Winter Season.

## **Aim**

The Directorate's aim is, so far as resources permit, to maintain or reinstate free and safe traffic flow, on all routes as quickly as possible during the winter period and to ensure that vehicles and pedestrians can use them with safety. As far as possible Merthyr Tydfil County Borough Council will comply with the requirements of the document “Well Maintained Highways”.

In icy conditions, priority will be given to A and B roads, vehicular routes to Hospitals, Fire Stations, Ambulance Stations and Emergency Centres, followed by C routes and bus routes; These will be followed by through routes in built up areas and roads to isolated farms. This is done by utilising Precautionary Salting Routes(1-4), prior to the onset of icy conditions. Any other routes will not be dealt with by the use of these routes, but on an adhoc basis as determined by requests via the Highway Customer Care Centre.

## **Personnel**

In conjunction with the Corporate Chief Officers, the personnel who will be primarily responsible for the effective winter maintenance operation are:

Chief Officer, Neighbourhood Services

Highways Manager, Neighbourhood Services

Highways Supervisor, Neighbourhood Services

Further details and telephone contacts are given in Appendix A - Directory of Contact Names

### **Emergency Planning**

Should the situation deteriorate enough for it to be deemed as an Emergency situation then the Emergency Planning Procedure of Merthyr Tydfil County Borough Council at the time of the emergency should be instigated.

### **Road Damage Reporting**

An inspection of all highways adversely affected by freezing conditions should be carried out and details including estimates forwarded to the Highways Manager as soon as possible after the thaw. It is particularly important to warn of major damage that could affect the maintenance or improvement programmes.

### **Third Party Claims**

As a result of executing its obligations in respect of winter maintenance some damage may be caused to the property of a third party. This issue is addressed separately in Appendix D. When snowfall occurs, the priority is to keep open the routes in the same priority as above and, when conditions permit transfer resources to lower priority routes.

Whilst the Directorate's main aim is to attend to the public highway, resources will be deployed to assist emergency services if required.

### **Weather Forecasts**

Daily weather forecasts will be received by email (1/11/2018-31/3/2019), from the Weather Forecast Provider, each day. The email will be sent to the Lifeline and will be subsequently transmitted to the Highways Maintenance Section during the normal working day. Outside the normal working day the Standby Officer will log onto the weather portal for the most up to date weather information. The Highways Manager or his representative will decide the appropriate action and relay their instructions to the Highway Construction Team, emailing the information to the Standby Officer, the Weather Forecast Provider, the South Wales Police Authority and all neighbouring Authorities.

Any update to a forecast will be emailed to Lifeline and forwarded to the appropriate location, depending on the time of day. The Highways Manager, his deputy or officer on call will, if appropriate, subsequently contact the Highway Construction Team with a revised plan of action. Clarification of further information can always be sought as necessary by using the Weather Forecast Provider's consultancy service; the telephone number is ex-directory and for use of appropriate personnel only. The update is recorded on the Winter Maintenance Action Form.

The information issued by the Weather Forecast Provider is shown on the following pages.

🕒 October 11, 2016 12:00 PM

Merthyr Tydfil County Borough Council

36 hours

36 hours	Tue, 11																								Wed, 12																							
<b>Merthyr</b>																																																
Road Surface Temperature min. (°C)	13 14 14 14 13 12 11 10 9.8 9.3 8.9 8.7 8.6 8.5 8.4 8.3 8.4 8.7 9.2 9.8 11 12 12 13 13 13 13 12 11 10 9.8 9.1 8.6 8.1 7.6																																															
Snowfall (mm/h)																																																
Snowfall Sum (mm)	0.9																																															
Air Temperature (°C)	11 12 11 11 10 9.8 9.3 8.9 8.0 7.9 7.8 7.5 7.2 7.1 7.1 7.3 7.4 7.5 7.8 8.3 8.5 9.2 10 11 11 11 11 10 9.4 8.6 7.8 7.3 7.1 6.9 6.4																																															
Relative Humidity (%)	72 70 69 70 72 76 79 82 84 86 88 89 91 92 92 90 91 90 88 83 81 79 78 76 76 77 80 82 83 84 86 89																																															
Precipitation Total Amount (mm/h)	0.9																																															
Precipitation Maximum (mm/h)	0.2 0.1 0.2																																															
Precipitation Probability (%)	0.8 1.3 2.5 3.3 3.8 3.5 3.0 3.8 3.0 3.8 3.6 6.3 10 7.5 6.3 3.8 0.9																																															
Windspeed (m/s)	4.4 5.0 4.8 4.6 4.3 3.7 3.5 4.0 4.4 4.6 4.9 5.4 5.6 5.9 5.7 5.3 6.6 7.2 7.3 7.2 7.1 6.8 6.5 6.8 5.5 5.8 5.9 6.3 6.6																																															
Brynmaer																																																
Baverstocks																																																
Aberdare																																																
Treorchy																																																

LUNCHTIME FORECAST ISSUED TUESDAY 11TH OCTOBER 2016: This afternoon, increasing amounts of cloud mixed with sunny or bright spells. The risk of seeing the odd isolated shower.

Variable amounts of cloud through this evening and tonight with clear spells and isolated showers

On Wednesday, there will be sunny spells and the slight risk of a shower.

RSTs will stay above zero. No road hazards expected. High confidence.

2-5 DAY FORECAST ISSUED TUESDAY 11TH OCTOBER 2016: Largely dry with clear spells on Wednesday evening and overnight. Sunny spells on Thursday with a risk of the odd shower but most areas staying mainly dry. Overnight, it will become rather cloudy with a chance of some patchy drizzle. Friday will be an overcast day with some patchy light rain or drizzle. However, during the night the rain will turn more persistent. Early rain will clear on Saturday to leave sunny spells but also some showers, these could be heavy with a risk of thunder. It will turn quite breezy too.

**5-10 DAY FORECAST:** Latest guidance suggests an unsettled and wet period with low pressure systems moving in from the Atlantic, giving spells of rain, some heavy, but also drier periods in between. The southerly to south-westerly airflow should hold temperatures slightly above average for this time of the year.

### Level of Service

Instructions for the level of service are at the discretion of the Highways Manager (or his representative), and depending on weather conditions, will fall into one of the following categories.

- i **No action**
- ii **Patrol wet spots** - undertaken by drivers in gritting vehicles on specified routes to apply salt as instructed.

- iii     **Presalt** - undertaken by drivers in gritting vehicles to apply salt at the specified rate for the complete length of the scheduled routes, or selected routes, or parts of selected routes.
- iv     **Snow ploughing and salting** - ploughing and salting to be undertaken simultaneously.

Operational instructions will be issued by the Highways Manager or his deputy and will be in the following format:

- I       The resources required e.g. number of gritters, ploughs required, mates etc.
- li      The type of action to be taken e.g. salt all routes, salt wet patches etc.
- iii.    The rate of spread required is to be stated.
- iv      The routes affected by the action.
- V      The start time for any action required

## **Specification for Provision of Winter Maintenance Services** **Highway Construction Team (HCT)**

### **Supply of Operatives**

All drivers of gritters should hold a National Vocational Qualification in Winter Maintenance, details of which shall be provided upon request. The contractor shall have sufficient drivers available to maintain salting activities around the clock without contravening any requirements of Health and Safety at Work Act 1974, Working Time Directives and Driving Hours Regulations.

All operatives must be thoroughly trained and versed in the use of suitable plant and equipment and should be sufficient to deal with expected circumstances.

When precautionary salting is being undertaken it is sufficient for drivers only to man the plant. However, when moderate falls (25mm - 100mm) or heavy falls (greater than 100mm) are predicted and ploughs are fitted the driver of each vehicle shall be accompanied by a mate, who need not be a driver.

A winter core period will run from 1st Friday in November (or last Friday in October) to the last Thursday in March (or first Thursday in April). The operation during this period will run on a stand-by mode and be single manned for precautionary salting and for wet spot salting or double manned when the need for snow ploughing seems likely. The core period may be extended should severe weather conditions dictate.

### **Supply of Drivers**

For night shift operations, the Highway Construction Team shall provide a rota of works drivers, for attendance at depots. The rota shall be made available to the Highways Manager.

### **Supply of Plant**

The supply of plant will be the responsibility of the Highway Construction Team and shall be at least capable of precautionary salting **all** routes within a 3-hour period.

### **Storage of Salt**

The following points shall be observed when storing salt to be used for winter maintenance.

1. The store and any drainage from the salt barn must be kept away from the root spread of hedges, trees and adjacent gardens.
2. The salt barn shall be dressed to a ridge, or series of ridges, in order to avoid ponding of water within the heaps.
3. The salt stock shall be covered as far as possible except when delivery or loading onto vehicles is being undertaken.

### **Salt Bins**

The Highway Construction Team (HCT) will be issued with a complete list of salt bin locations and shall ensure that the bins are fully stocked prior to the onset of winter; the actual timescale will be advised subsequently. Immediately following a period of snow or icy

weather the HCT shall ensure that all bins are topped up ready for the next period of adverse weather. The HCT is to also check the salt bins at the start of every calendar month and fill as necessary.

### **Response Times**

The winter maintenance contractor shall adhere strictly to the following response times:

**Reaction time** - time to respond to instructions, including any additional instructions issued outside the working day - **shall be no longer than 1 hour.**

**Salting Time** - time to complete precautionary salting of each route shall be no longer than 4 hours.

There are 3 salting routes to be operated by Merthyr Tydfil County Borough Council during 2015/16, which are described in detail in Appendix B. If a situation arises that, due to operational circumstances e.g. breakdown of gritters etc, Route "E1" will be utilised in order to keep the main roads leading to and from Prince Charles Hospital open. This will be treated by whatever means determined as determined by the Highways Manager or his representative. Route "E1" is also detailed in Appendix B

### **Precautionary Salting**

Every vehicle equipped for salting will have an arranged route for the first load for salting. It is essential that all operatives know exactly what to do and where to go in the case of a sudden frost without waiting for instruction. Details of the routes are given in Appendix B at the rear of the document.

If, during the course of precautionary salting operations, the weather deteriorates and snow starts falling and accumulating the client duty officer must be informed immediately and authority obtained for any increased level of action.

### **Snow Clearing**

It is essential that salting should be carried out as soon as snow starts to fall and settle on roads. Ploughing will commence as soon as there is sufficient depth to plough and that snowfall is continuing. Once priority routes have been cleared the vehicles can be used on other routes, but only after the consent of the Highways Manager or his deputy.

In severe conditions to enable snow operations to continue, it may be necessary to move stranded vehicles. In this case, contractors with adequate experience should be employed in view of the serious risk of inadvertently damaging vehicles which are likely to be equipped with sophisticated braking and security systems. Vehicle recovery should only be made under police supervision.



### **Decision Making Process to determine the necessary daily Action for Precautionary Salting only.**

In order to help with the decision making process, a Treatment Matrix, based on the tables used in Appendix H of "Well Maintained Highways", is shown below. This gives salting rates

<b>TREATMENT MATRIX – DRY SALTING (De-icer spread rates in g/m<sup>2</sup>)</b>	
<b>Frost or forecast frost. Road Surface Temperatures (RST) and Road Surface Wetness</b>	<b>g/m<sup>2</sup></b>
RST below 0° and above -2° C and dry or damp road conditions	10 (8)
RST below 0° and above -2° C and wet road conditions	10 (11)
RST at or below -2° C and above -5° C and dry or damp road conditions	15 (14)
RST at or below -2° C and above -5° C and wet road conditions	30 (28)
RST at or below -5° C and above -10° C and dry or damp road conditions	30 (27)
RST at or below -5° C and above -10° C and wet road conditions	2 x 30 (27)

for different ambient conditions.

The following Parameters have already been chosen using Tables in Appendix H – Spreading Technology, Salt Coverage, Traffic Volumes Salt Loss and Spreading Distribution. This indicates that Column G in Treatment Matrix A of Appendix H should be used. Figures in brackets indicate those that are shown in Appendix H. The appropriate figures are to be used by MTCBC are shown adjacent to the bracketed figures.

<b>TABLE H10 – Definitions of Road Surface Wetness</b>		
<b>Definition</b>	<b>Description</b>	<b>Water film thickness (mm)</b>
Dry road	A road that shows no signs of water or dampness at the surface but may be just detectably darker (however it may have moisture contained in pores below the surface that is not "pumped" to the surface by traffic)	0 to 0.03mm
Damp road	A road which is clearly dark but traffic does not generate any spray. This would be typical of a well-drained road when there has been rainfall after 6 hours before the treatment time.	0.03 to 0.05mm
Wet road	A road on which traffic produces spray but not small water droplets. This would be typical of a well-drained road when there has been rainfall up to 3 hours before the treatment time	0.05 to 0.1mm

TREATMENT MATRIX D – Precautionary Treatments Before Snow or Freezing Rain.		
Weather conditions	Light or medium traffic	Heavy traffic (Rush hour periods) (07.00 - 09.00am) & (16.00 – 19.00pm)
Light snow forecast	Spread 40g/m <sup>2</sup> of dry salt	Spread 20g/m <sup>2</sup>
Moderate/Heavy snow forecast	Spread 20 – 40g/m <sup>2</sup> of dry salt	Spread 40g/m <sup>2</sup>
Freezing rain forecast	Spread 40 or 2 x 20g/m <sup>2</sup>	
Note 1: The lower rate of 20g/m <sup>2</sup> can be used if the snow is likely to settle quickly, e.g. when the road surface temperature is below zero, the road surface is not wet and the snow is not wet and/or there is little traffic after snowfall begins and settles.		
Note 2: Spreading salt before freezing rain can have a limited benefit and Service Providers should be prepared to make follow up treatments on any ice that has formed.		

**Recommended Rates of Salt Spread other than for Precautionary Salting**

The tables below are for guidance and should be used only when conditions in the field differ from those predicted and authorised by the Highways Manager or his deputy.

<b>Type of Treatment</b>	<b>Spread Rate of Salt(g/m<sup>2</sup>)</b>	<b>Remarks</b>
Treatment of Ice	10-40	If a rapid thaw is required to restore skid resistance quickly then 40g/m should be applied
Treatment of Snow	10 for every 25mm of snow/ °C below 0° C	See Table below
Treatment of hard packed Snow and Ice a. Down to -5° C b. Below -5° C	20 NIL	Successive salt spreads as necessary Alternative to salting
Sustained Low Temperatures	NIL	Alternative to salting

**Rate of Salt Spread (g/m<sup>2</sup>) Required to Reduce Snow to Slush**

Temperature °C	Depth of Snow mm			
	25	50	75	100
0	10	20	30	40
-1	20	40	60	80
-2	30	60	90	120
-3	40	80	120	160

**Notes**

1. Falls of snow greater than 50mm deep shall be removed using a combination of ploughing and salting.
2. Quantities of salt shown in the shaded area of the table will require more than a single application.

**Closure of Roads**

Sign posting of blocked roads is important. Close liaison is required between the Police and the Highway Authority when deciding to close roads. Only the Police are empowered to close roads and will need the assistance of the HCT who will erect appropriate signs. The Police will also assist in the introduction of one way traffic systems on newly opened sections of road to permit the better employment of snowploughs.

**Treatment of Footways**

Snow on footways can be treated by salting and in the case of light to moderate falls this may well be sufficient. In the case of moderate to heavy falls it may be necessary to physically remove the snow.

In the event of any treatment being necessary the priority to be applied to footways is listed below: -

Priority                      Location

- 1
  - a. Main shopping areas.
  - b. In vicinity of hospitals, health centres and surgeries.
  - c. In vicinity of schools and colleges (weekdays in term time only),
  - d. In vicinity of railway and bus stations, car parks and taxi ranks.
  - e. Footways on steep downhill sections of road.

- 2
  - a. In vicinity of public buildings.
  - b. In vicinity of homes for disabled and elderly and to sheltered accommodation.
  - c. In vicinity of main businesses, hotels etc.
  - d. In vicinity of churches and other places of worship (Sundays only)
- 3
  - a. Footways at other locations as necessary.

The Action Plan for dealing with footways in the event of an “Emergency Whiteout” situation is detailed below and on Drawing Numbers 1,2/1,2/2, 2/3,3/1,3/2 and 4. The County Borough has been divided into 4 Zones. Each Zone will be allocated with:-

**A Supervisor** – The Supervisor will be peripatetic within their Zone and will report back on progress as well as to convey instructions to operative teams on the ground. The Supervisor will also undertake general inspections of his area to gain first hand knowledge of the difficulties being experienced.

**Operatives** – who will be split into Teams in order to address problems within there designated Zone. They will work on the priority lengths of highway indicated on the Zone plan for that area (see drawing numbers 1,2/1,2/2,2/3,3/1,3/2 and 4). When the clearance/salting work of the Priority 1 areas is nearing completion the Teams will be instructed to proceed to Priority 2 areas – these areas may be in another village but operatives will remain in the Zone until all problems within that Zone are completed.

Supplies of rock salt will be delivered to the Teams, through the clearance period, by utilising the “Day Lorries”.

The time taken to clear snow from footways will depend upon the quantity and prevailing conditions. However it is expected that sufficient width (1.0m) be cleared to allow safe walking on Priority 1 footways within 24 hours of the cessation of the snow, by which time work should have started on Priority 2 footways

The decision to initiate the “Emergency Whiteout” Action Plan will be dependent on the timing of the fall of snow. During working hours the decision will be taken by the Highways Manager or his Deputy. Should snow fall during an “out of hours” time period, then the Duty Standby Officer will make the decision.

### **Damage to Property**

Any damage to the property of third parties must be reported to the Highways Manager as soon as possible but in any event not later than 2 weeks following the end of the weather emergency.

### **Action when thaw comes**

Arrangements must be made to take full advantage of any thaw, which may occur, especially when the thaw may only be temporary and likely to be followed by freezing temperatures at night.

HCT shall arrange for men to be available to expose and clear gully mouths and to cut channels to the same to permit the free flow of water. The winter maintenance officer will instruct the number of gangs to be used and the locations where they shall be deployed.

HCT shall have sufficient flood warning signs, lamps and sandbags available to use immediately should a flooding situation arise.

Revised winter service guidance, contained within Appendix H of well-maintained Highways was issued in September 2013. This guidance was considerably more detailed and onerous to implement than the previous update in 2011.

Following comments and concerns by many Winter Service providers nationally a review of this document was proposed and, together with other Welsh Authorities, the proposals were not fully adopted, until the completion of the review.

This guidance has now been revised as part of the update to the Well-Managed Highway Infrastructure A Code of Practice.

Well Maintained Highways. Welsh Highway Authorities have engaged in this appraisal and provided feedback to the document through the Welsh County Surveyors Society. The Well-Managed Highway Infrastructure ACoP was issued in October 2016 and this guidance is being considered in collaboration with Welsh counterparts via CSS Wales as part of the Authorities updating of future Winter Maintenance Plans.

## **APPENDIX A - Precautionary Salting Routes**

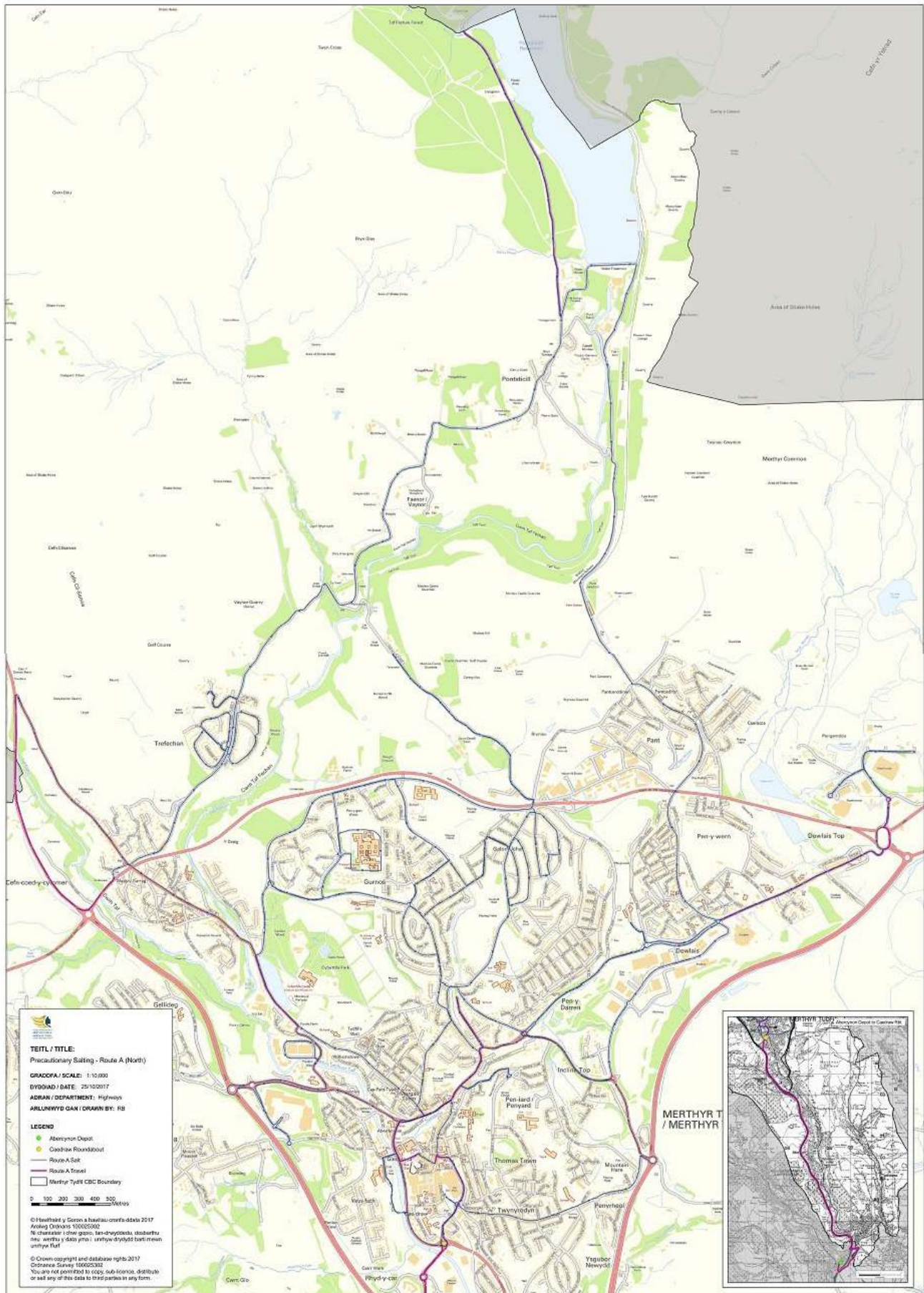
Merthyr Tydfil County Borough Council will be operating three precautionary salting routes during the winter 2018/19. Also detailed is Route “E1”, this route will be used at the discretion of the Highways Manager or his representative, in emergency situations and is to be used continuously until a decision is made to revert to the original routes. The details of each are provided on the following pages.

**Precautionary Salting Route A(North)**

- Travel:** Depot to A4054  
**Salt:** A4054, Merthyr Rd, to Hoovers. Past Hoovers to Abercanaid Rdt Past Garages to Caedraw Rbt, Ave de Clichy turn Left over **New Bridge into one way system, Collage Boulevard**, Car Park, Penry St, Right into Avenue de Clichy one way system back to New Bridge to Penry St Left to Oak Tree Traffic Lights, Bethesda St., Pontmorlais West, Right into High Street, Church Street, Tramroadside North, Tesco's Rbt., Court Street, Lower High Street Caedraw Rbt back to Tesco's Rbt, Railway Station, Twyn Hill to Goat Mill Road, Right to Mt Hare Rbt., return along to Goat Mill Road Rbt, Left down hill to Penydarren Rbt, return to Goat Mill Rd Rbt, Left along Goat Mill Rd to OP Chocolate Rbt., Right into High Street, Dowlais to Dowlais Top Rbt., from Dowlais Top Rbt to Asda Rbt, roads on Pengarnddu Estate.
- Travel:** Asda Rbt to Dowlais Top Rbt., High St, Dowlais, to OP Chocolate Rbt  
**Salt:** Down High St Dual Carriageway, Down New Road to Penydarren Rbt Return to Balaclava Rbt, into Balaclava Road to salt School entrance, back along Balaclava Rd., Left up High St. (Dual Carriageway) to OP Chocolate Rbt, Victoria St, Pant Rd, Road to Ponsticill over Dam, turn Left to County Boundary at Cwm Char Bridge (turn).
- Travel:** Cwmcarr Bridge to Ponsticill  
**Salt:** Centre of Ponsticill to Trefechan, Sweetwater Park, The Green, Beechwood Ave., Poplar Pl., Hawthorn Hill, Crabtree Walk, Cherry Tree Cl., The Birchway, Crabtree Walk, Maple Crescent, Right into Rowan Way, Right into Linden way, Right into Maple Crescent, Left into Rowen Rise, Left onto Upper Vaynor Road, Right into Upper High St., to A470 (T)
- Travel:** A470(T) , A465(T) to first slip road  
**Salt:** Slip road, Grawen Lane, High St., Brecon Rd., to Traffic Lights, turn Right into Bethesda St., Joseph Parry Way, Swansea Road (Dual C/W) into Retail park to Aberdare Rd back to Swansea Rd Left to A470 (T), Return down Swansea Road (Dual C/W), Turn left at lights, into Cyfarthfa Road, Cyfarthfa Ind Est., Cyfarthfa Road, Brecon Road.
- Travel:** Brecon Road to Gurnos Road Jct.  
**Salt:** Gurnos Road To Clover Road Rbt., Gurnos to Mini Rbt., Poplar Way, Right into Chestnut Way (Shops), Left into Goitre Lane, Left into Gurnos Ring Road, along Gurnos Ring Road, past Pengurnos Road, to Clover Road Rbt., Gurnos Road then Left into road to Prince Charles Hospital Rbt., on to northern entrance to PCH, through A&E of PCH out onto main road Rbt., Right to Gurnos Road, Right to Galon Uchaf Rbt., Bryniau Road, Left in to Pontsarn Road, turn in Pontsarn Close, Pontsarn Road, Right in to Bryniau Road, Galon Uchaf Rbt, 12<sup>th</sup> Ave, Left Mitchell, Left up Hill by Shops Roberts Ave Left to Mitchell back to Galon Uchaf Rbt, Left 10<sup>th</sup> Ave, Left up Mitchell, Left into Roberts Ave, into 11<sup>th</sup> Ave, Galon Uchaf Road, 9<sup>th</sup> Ave, Left onto Galon Uchaf Road, Left into 10<sup>th</sup> Ave to Galon Uchaf Rd, Right into 6<sup>th</sup> Ave to 4<sup>th</sup> to Sycamore Rd to Gurnos Rd, Right to Rbt up Poplar way, Right into Chestnut way, Right into Goiter Lane, Return 4<sup>th</sup> Ave to 6<sup>th</sup> Back to Galon Uchaf Rd, Right Down to Gwaunfarren Rd., Hirwaun Tce. Right onto Gurnos Road, right up Gurnos Road to Rbt., left into Ash Crescent, right into Gurnos Road, Down Gwaelodygarth, High Street Right into Penydarren Park, Right to Pontmorlais West, Right Brecon Rd, Right into The Walk, The Grove, Left Return Gurnos Rd Right to Hirwaun Tce, Right into Tramroad Lane, to Rbt., right down High Street., right into Alexandra Road, turn at top.
- Travel:** Right into Penydarren High Street Left into Penyard Road,  
**Salt:** Penyard Road Right onto Queens Road and Return down Penyard Road,
- Travel:** Pontmorlais West to Oak Tree Traffic Lights Left Avenue de Cilchy Left Castle St.  
**Salt:** Glebeland St,
- Travel:** Return to Depot,

4x4 Salter





**Precautionary Salting Route B(South)**

**Salt:** Depot to Merthyr Rd, turn right onto A4054, Troedyrhiw, Merthyr Vale, right into Darren Las, Merthyr Vale, Edwardsville, turn left onto B4254, through Cardiff Rd, Blackbrook, Brynteg, Left to Twynygarraig, into Cilhaul, down to Railway Tec, Right up Cardiff Rd, Left by Church and down one way system to Thomas Street, Left into Perrott Street, Pass Sq into Fox Street, one way system, Railway Tec, Left Cardiff Rd, Glynbargoed Rd to junction with Mill Street, turn into Heol y Glyn, turn at end of Heol y Glyn return to, and salt junction with Heol Nant Caiach, back onto Glynbargoed Road to High St. left onto B4255, through Trelewis, to Oakland Street, Bedlinog, High St, Upper High St, Pleasant View, top Common Road to Gelligaer Common Road. (Turn on Common Road Junction)

**Travel:** Common Road to Lewis St.

**Salt:** Lewis St, George St.

**Travel:** George St, Top Square, High St, Bottom Square.

**Salt:** Commercial St, Hylton Tce, Bedw Rd Rdt,

**Travel:** High St., Oakland St., to Trelewis.

**Salt:** Maen Gilfach, Maen Ganol (Bus Route).

**Travel:** Prescilla Ter., High St..

**Salt:** High St, Junction with Glynbargoed Road, Left at Shingrig Junction into Gelligaer Road to New Rdt return Gelligaer Road, Right into West View Cresc, Nant Gwyn, West View Crescent left onto High St Left down to junction right onto Caiach tec right to Nant Gwyn High St down to junction Left to Railway Bridge,

**Travel:** High St, Railway Bridge on Shingrig Road, Bwl Rd to junction with Pentwyn Rd, Nelson

**Salt:** Pentwyn Rd, Caerphilly Rd, Cardiff Rd, Junction with A4054, left onto A4054, Cardiff Rd to Fidlers Elbow Rbt, to Nelson Turn by Layby Railway Pub back to Fidlers Elbow Rbt, to A470 Abercynon Rbt and back to Fidlers Elbow Rbt, out to Junction Llecllwen Hall Hotel back to Fidlers Elbow Rbt ,

**Travel:** Fidlers Elbow Rbt to junction of road adjacent to Glan Taff Pub.

**Salt:** Road adjacent to Glan Taff Pub, Rodericks Ter, Goitre Coed Rd, Penlocks Bridge, Turn,

**Travel:** Penlocks, Goetre Coed Road

**Salt:** Fir Tree Drive

**Travel:** Fir Tree, Goitre Coed Road

**Salt:** A4054 Cardiff Rd to Junction with Commercial Tec, Commercial Tec, Right into Thomas Street, Right into Mary Street, back to Junction with Cardiff Road, And Salt to Edwardsville,

**Travel:** Merthyr Vale Left into Wesley Place,

**Salt:** Wesley Place Bells Hill, Golwg yr Afon, to Aberfan Rdt, to Bridge St to Troedyrhiw Sq,

**Travel:** Left A4054 to Hoovers Rbt, to Abercanaid Rbt, to Caedraw Rbt

**Salt:** From Caedraw Rbt to A470 Rbt (T)

**Travel:** A470(T) to Caedraw Rbt., Ave de Clichy left into Penry Street,

**Salt:** Penry Street, Part Dynevor Street, Left into Aberdare Road, Rdt Left to Keir Hardie Health Park, back to Rdt, Pantcelyn, Heol Gerrig, Brondeg, Heol Gerrig, Shirley Drive, Chester Close, Shirley Drive.

**Travel:** Shirley Drive.

**Salt:** Heol Gerrig (Top end by Playground), Winchfawr, Harlech Close, Kidwelly Grove, Monmouth Drive, left into Swansea Road, Beacon Heights entrance, right into Swansea Road, down to Swansea Road Rbt., Left into Heol Tai Mawr up passed Shops back to main Road Down to Rbt on A470,

**Travel:** Swansea Road back to Traffic Lights, Right into Nantygwennith Street,

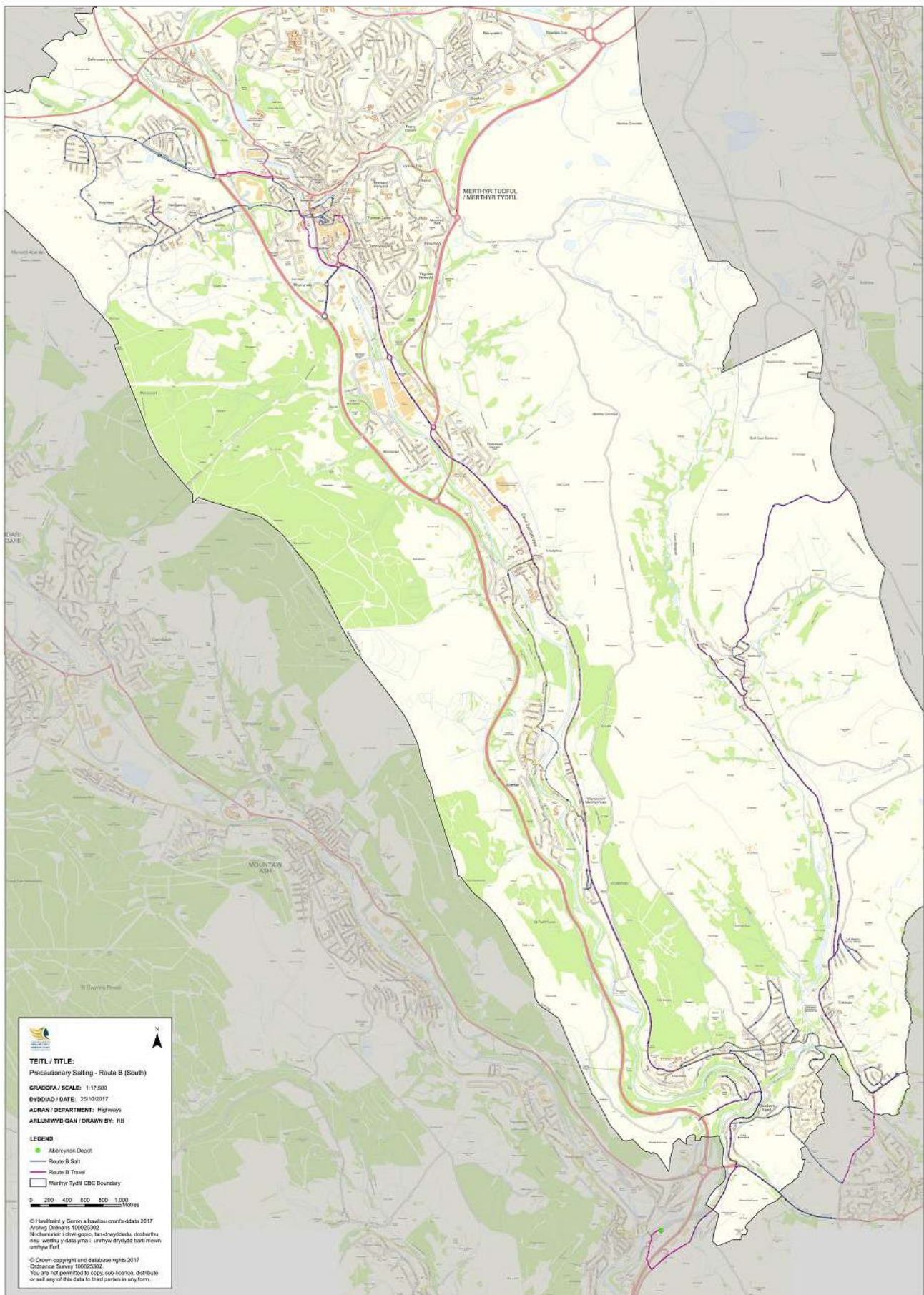
**Salt:** Nantygwennith Street, Dynevor Street,

**Travel:** Penry Street Ave de Clichy, Left into Castle Street,

**Salt:** Castle Street, Castle Yard Car Park, Bus Station, Wheatsheaf Lane, Victoria Street,

**Travel:** Back to Depot,



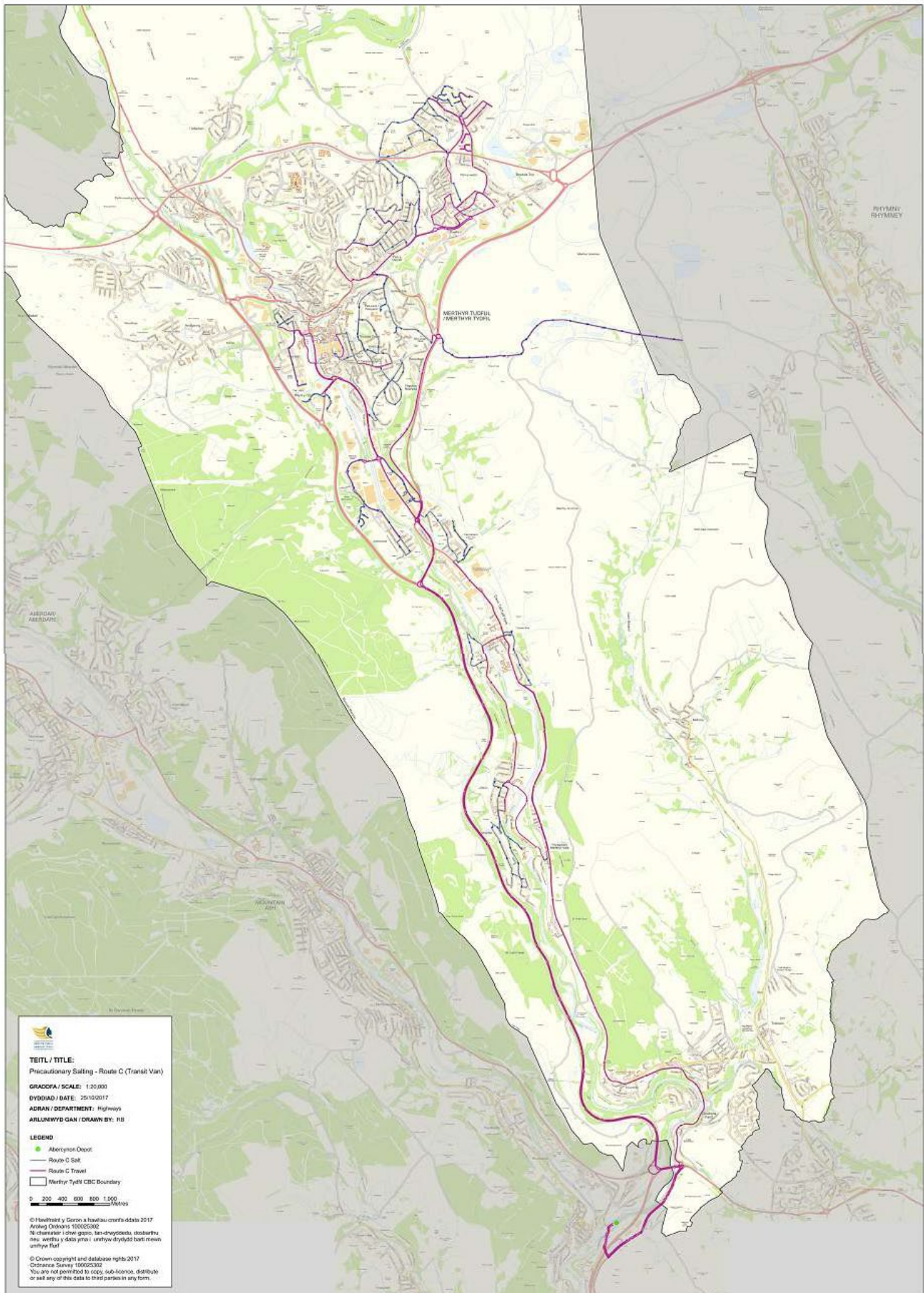


## **Precautionary Salting Route C (Transit Van)**

- Travel: Depot to A4054, A4054, A4060(T) to Mt Hare Rbt,  
 Salt: **Bogey Road to Junction with Common Road**
- Travel: Mt Hare Rbt to Mansfield Tec  
 Salt: **Mansfield Tec and Pantyffyn Road to Rbt Santes Tydfil School gates Pantyffyn Road Rbt back road to Cyfarthfa School gates Junction Ski Slope.**
- Travel: Gwernllyn Road Dowlais.  
 Salt: **Gwernllyn Rd., Garden Street, Union St., Lower Union St., South St., past "Bessemer Hotel" right into Balaclave Rd., Upper Elizabeth St., Berry Sq., Victoria St., Ivor St., Gwernllyn Road, Lower Road, Jones Street, The Hafod, Caeracca Villas, Edwards Street, Tai Twyniau, Gwladys Street.**
- Travel: Pant Road,  
 Salt: **Brecon Rise.**
- Travel: Brecon Rise, Pant Road.  
 Salt: **The Hawthorns.**
- Travel: Pant Road.  
 Salt: **Tai y Efail, Bryniau Road, to Galon Uchaf Rbt., return to Pant Ind Est through to junction with loop to Bus Depot, through Ind Est to Pant Road.**
- Travel: Pant Road, Tai y Efail.  
 Salt: **Rhodfar down to school and back up Heol-y- Bryniau.**
- Travel: Tai y Efail to Heol Rhyd y Bedd.  
 Salt: **Heol Rhyd y Bedd to Ind Est.**
- Travel: Ind Est, Pant Road. OP Chocolate Rbt Down to Gellifaelog Old Road,  
 Salt: **Right into Gellifaelog Old Road, Rocky Road, Left into Haydn Tce Right into Marshall Crescent Galon Uchaf Rbt., Rocky Road, right in to Haydn Terrace Gwaunfarren Road, right into Garden City right into Penybryn Est. Garden City, right in to Gwaunfarren Road, right up Gwaunfarren Road right into Tenth Ave.**
- Travel: Penybryn Est., Garden City.  
 Salt: **Left Gwaunfarren Road, right Nibloe Tce, Caehendy Street, Gellifaelog School, Greenfield Terrace, to Rocky Road Jct.**
- Travel: Rocky Road, Gellifaelog Road, right in to Penydarren High Street. Right in to Elim Street  
 Salt: **Elim Street, District Street, Lloyds Terrace,**
- Travel: Gwaunfarren Road, to Gwaelodygarth 1 way section.  
 Salt: **Gwaelodygarth 1 way section only,**
- Travel: Penydarren High Street Rdt Ski Slope. Right to Baden Tce.  
 Salt: **Right in to Darren View, Queens Road, Left by shop St Tydfil's Avenue Left to Jones Tce and Summerhill Place back to Queens Road to Twyn Hill.**
- Travel: Twyn Hill, Left in to Luther Street.  
 Salt: **Luther Street, St Tydfil's Avenue, Bryntirion Alma Street Railway Station by (Tesco,s)**
- Travel: Tesco,s Rbt., Tramroadside North, Left into Church Street.  
 Salt: **Church Street, Union Terrace, Courtland Terrace, Windsor Tce, to Twyn Hill,**
- Travel: Left Twyn Hill turn Right Primrose Hill,  
 Salt: **Primrose Hill, Glazier Road, Wallhead Road, Twyn hill Roundabout back to Glazier Road, Aneurin Crescent, to Christopher Tce, Millbourne Tec, right in to road side of MOTOFIX,**
- Travel: Travel back to Depot.
- Travel: Depot to Troedryhiw Cwmdru Rd.

**Salt:** Right into Cwmdy Rd., Nantymoed (bottom road), to Dynevor Pub, Ash Road,  
**Travel:** Aberfan Rd New Roundabout,  
**Salt:** Aberfan Rd., Hillside Close, into Aberfan Community Centre Car Park, turn in Car Park,  
 Hillside Close, B4285, Aberfan Rd., Aberfan Crescent, School Entrance, Walters Ter.,  
 Perthgleyision, left into Bryngoleu, right into road leading to Pleasant View, Kingsley Tce.,  
 Bryntaf, Cemetery Hill to Aberfan Rd..  
**Travel:** Aberfan Rd., to Bridge St., Junction  
**Salt:** Bridge St.,  
**Travel:** Grays Place,  
**Salt:** Grays Place,  
**Travel:** A4054 to Troedyrhiw Rock Lane by Beech Grove  
**Salt:** Road leading to Tramroad, Chapel Street, Tyntaldwyn Rd. to A4054 School St., Tyntaldwyn  
 Road to A4054.  
**Travel:** A4054 to turning to Rhydfach in Pentrebach  
**Salt:** Rhydfach (both parts) return, Griffiths Ter., Dyffryn Rd. to junction with A4060  
**Travel:** A4060 to Triangle Business Park,  
**Salt:** Through Triangle Business Park to Rbt.  
**Travel:** Abercanaid  
**Salt:** Abercanaid Rbt to Chapel St Newton St Gethin Place/Street Cardiff St left Chapel St,  
 Abercanaid.  
**Travel:** Abercanaid to Upper Abercanaid.  
**Salt:** Graig Rd, Anthony's Grove.  
**Travel:** Upper Abercanaid to Abercanaid Rbt., left into A4054, Plymouth Street, Caedraw Rbt., over  
 Bridge to Rhydycar Rdt:  
**Salt:** Rhydycar Leisure Centre and Welsh office roads back Rbt  
**Travel:** Ave de Clichy. Left into Penry Street, Aberdare Rd right into Heol SO Davies,  
**Salt:** Heol SO Davies down to Rbt and back up to Heol Dic Penderyn, Heol Llwyn Berry, Heol SO  
 Davies, Tramroadside, Ynysfach Road, Caerwern  
**Travel:** Caerwern, Ynysfach Road, Aberdare Road, Dynevor Street, Penry Street. Ave de Clichy,  
**Salt:** Swan Street, Masonic Street, Right into High St,  
**Travel:** Travel To Unit 5 Pentrebach.  
**Salt:** Unit 5 Carparks,  
**Travel:** Travel Back to Depot.



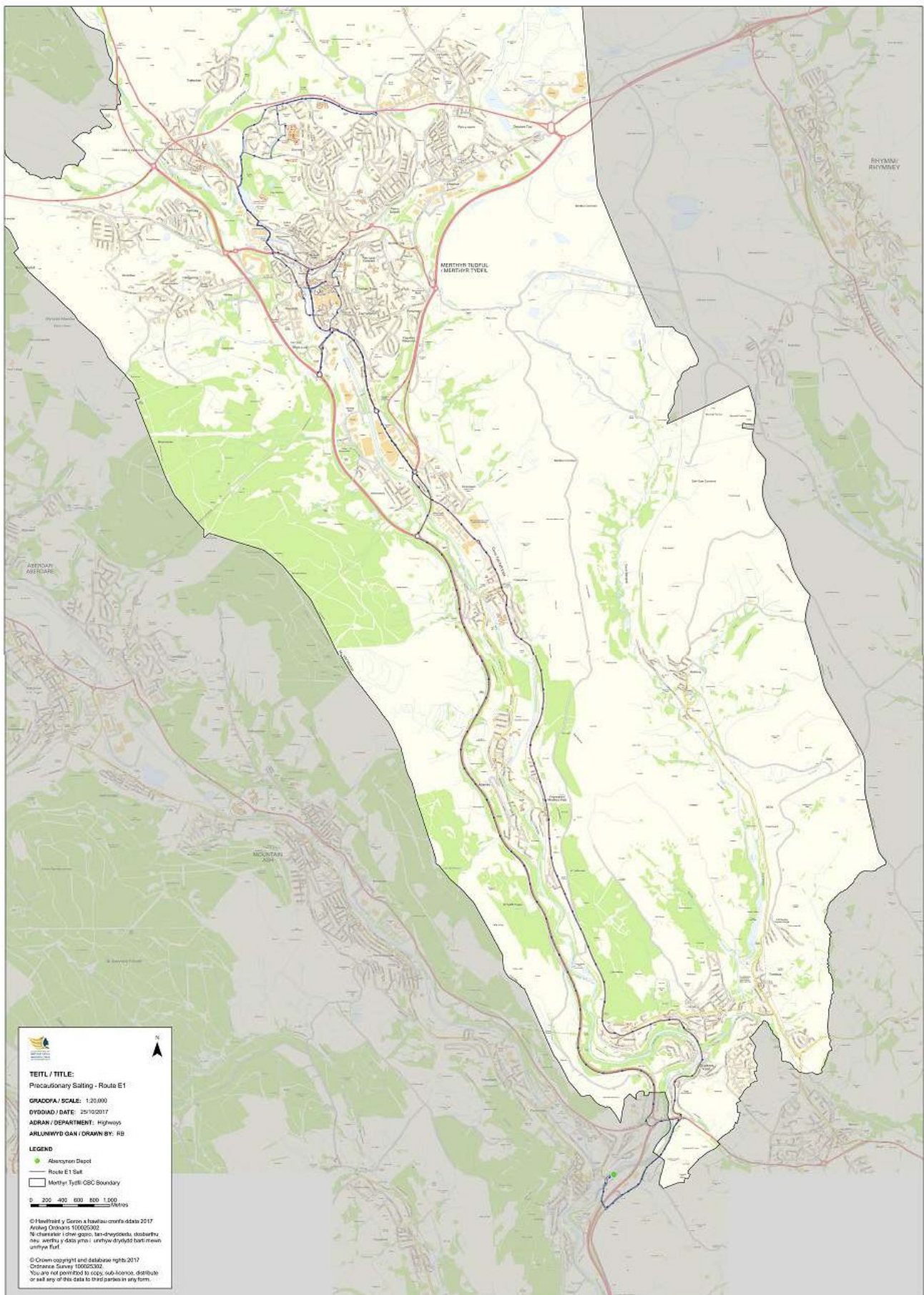


### **Precautionary Salting Route “ E1”**

**SALT:** Depot, Merthyr Rd, Abercanaid Rbt Caedraw Rbt., Rhydycar Link Rd., Rhydycar Rbt., link road to A470 (T) Rbt., link road to Rhydycar Rbt., Rhydycar Link Rd., Caedraw Rbt. Avenue de Clichy, turn left over new bridge (St Tydfil Bridge) into one way system, College Boulevard, Penry St., right into Avenue de Clichy, left into Castle St., right into Bus Station, return to Castle St., down Castle Street, to Avenue de Clichy turn left into Avenue de Clichy down to junction with College Boulevard, across new Bridge (St. Tydfils Bridge), College Boulevard, left into Dynevor St., Nantygwenith St., Cyfartha Rd., Brecon Rd., Gurnos Rd., Pen Gurnos(Ring Rd.), to Galon Uchaf Rbt., Ring Rd., Link Road to Entrance to Prince Charles Hospital, Entrance Road inside Hospital to A & E entrance, Road leading out of Hospital, Link Road south to Gurnos Ring Road, Brecon Rd., Cyfartha Rd., Joseph Parry Way, Ave de Clichy, Plymouth St., Merthyr Rd., Depot

**Once this route has been designated, it is to be maintained on a continuous basis until the Highways Manager or his representative makes a decision, to concentrate on other routes.**





## APPENDIX B – Grit Bin Locations

<b>Abercanaid</b>
Abercanaid Industrian Estate (Outside the RSPCA Centre)
Anthony's Grove (Colliery Cottage)
Anthony's Grove (os 1)
Anthony's Grove (os 12)
Anthony's Grove (os 26)
Canal Bank to Abercanaid Road Link
Canal Row
Cardiff Street (F/P Link to Pentrebach)
Catherine Close (by 13)
Gethin
Graig Road
Lewis Square
Llwyn-yr-Eos

<b>Aberfan</b>
Aberfan Fawr
Civic Amenity Site(inside compound)
Moy Road (Near Community Centre)
Moy Road (near Coronation Terrace end)
Nixonville
Oakfield Street
Pantglas Road
Perthygleision Bridge
Woodland Drive
Ynysygored

<b>Bedlinog</b>
Ashgrove Villas
Bedlinog Terrace
Bedw Road (Top, by bridge)
Coly Row
Commercial Street (by Resource centre)
Graig cemetery rd
Graig Terrace
High Street (In front of Chapel St)
High Street (near Post Office)
High Street (near Station Tce)
Mini Rbt Hylton/Bedw/Coly Row
Moriah St (Bottom)
Moriah St (Top)
Mount Pleasant
Oakland Street (lane between 28/29)
Old Quarry Lane
Pleasant View (Bottom)
Pleasant View (Top)

## WINTER SERVICE POLICY 2018/19

Road to Ty'r ywen (Trelewis to Bedlinog)
--

<b>Castle Park</b>
Caernarvon Grove (Nr1)
Monmouth (Harlech Drive junction)
Raglan Grove
St Donats (by 14)

<b>Cefn Coed</b>
Bryntaff by No37
Cilsanws Lane (by Or Diwedd)
Cilsanws Lane (by Plessant View)
Cloth Hall Lane ( by Caversham)
Cloth Hall Lane (by Bryn-Sirol)
Cloth Hall Lane (by No1 Gersanws)
Grawen Lane by Grawen House.
Heol-y-Mynydd By Ty Croeso.
Holford Stret Opp No1.
Lower Vaynor Road (footpath to school)
Maesgwynne (outside No. 28)
Maes-y-garreg Flats by turning area.
Maes-y-garreg side No26 on Verge.
Pearces Court by Llysfaen.
Pontycapel Road Opp Junction to Jobs Lane.
Somerset Lane by Meadow View.
Triangle (on grass Verge)
Upper High St By Two Hoots.
Well Street by Entrance.

<b>Dowlais</b>
Balaclava Road – opposite Regent Street
Blaen Dowlais (side rugby club)
Church Street, ( Near Dowlais library)
Cross Morlais Street side of No. 38 Broad Street
Entrance to Azalea Park
Glanmore Gardens
Graig Terrace – opposite Wimbourne Street
Llewellyn St, Dowlais (Near car park)
Rectory Close, Dowlais (top of street)
Station Tce., opp No. 25
Station Terrace – opposite No. 4 Coedcae
Winifred Street, (S/o 55)

<b>Edwardsville</b>
Ashgrove
Forest Grove
Manor Court
Park Lane
Taff Vale Estate
Windsor Road (By Ent to Quakers View)



<b>Georgetown</b>
Llwyn Dic Penderyn (s/o 33)
Llwyn Dic Penderyn (By1)

<b>Gurnos Estate</b>
Accacia Avenue (O/s 11 )
Accacia Avenue (Opps 45)
Birch Grove
Cedar Way (Top End by Nursery)
Clover Road (near shop)
Community Centre Green Area /Popular Way ( near Palm Road flats)
Fernhill Close ( o/s 2 grass verge)
Forsythia Close ( O/s Jonny Owen building)
Hawthorn Avenue(Junction to Walnut way)
Hawthorn Avenue(Near shop bottom junction)
Heather Road (r/o 18)
Heather Road (R/o 2)
Honeysuckle Close ( Near 1)
Hornbeam Close
Laburnum Close/Holly Way Junction
Lakeside Gardens (Near Cyfarthfa Villa)
Lakeside Gardens (o/s 44)
Lakeside Gardens (o/s 83)
Lakeside Gardens (s/o 109)
Lavender Road (half way up)
Oak Road Green Area ( Opps 87)
Oak Road Green Area (grassed area half way opposite 68)
Rowan Way/ Oak Road Junction (Near 22)

<b>Heolgerrig</b>
Andrews Close
Cwmglo Road (os 53)
Cwmglo Road (The Maltings)
Durham Close
Exeter Close
Heolgerrig Road, Top End by Playground
Martins Close (junction with Six Bells)
Mount Pleasant
Road off Heolgerrig (by 133)
Salisbury Close
Shirley Drive (os 75)
Shirley Drive (os 78)
Tramroadside
Winchfawr Park (os 12)
Winchfawr Park (os 8)
Winchfawr Road/ Green Meadow View
Winchfawr Road/ Mountain Rise
Woodland Way

## WINTER SERVICE POLICY 2018/19

<b>Incline Top</b>
Bradley Close s/o ardwyn, s/o highfield
Bradley Gardens Estate ( s/o 15 Llwyn yr Eos)
Bradley Gardens Estate (1 Llwyn yr Eos)
Bradley Gardens Estate (Entrance to estate on grass verge)
Bradley Gardens Estate (s/o 20 Glynmil)
Danyparc View, Bradley Gardens S/o 41 wide footpath
Mount View, Mt Hare, near entrance, s/o windy view

<b>Llwyn-on Village</b>
A470 By No16 As Plan
A470 Junction to Pant-y-Dwn

<b>Merthyr Vale</b>
Belle view Tce
Mount View (A4054 junction)
Mount View (by 25a)
Pendducau Farm Road
Pontygwaith
Pontygwaith

<b>Merthyr Vale</b>
Brecon Rise (o/s 6)
Brecon Rise (opps 23)
Brecon Rise (s/o 46)
Brecon Rise (s/o 56)
Eighth Avenue (opposite 18)
Glanmorlais (s/o 10 grass verge)
Glanmorlais (s/o 25)
Heol Bonymaen (s/o 23)
Nantmorlais (o/s 1)
Pant Close ( Top junction)
Pant Close (bottom of the road)
The Hafod (rear of 86 grass verge)
The Hawthorns (outside no12)
The Hawthorns (outside no17)
The Hawthorns (s/o 34)
The Rise (opps 3)
Trevor Close (opposite 3)

<b>Park Ward</b>
Alexandra Close
Briarhead
Gwaloedygarth
Gwendoline Street
Penydarren Park

<b>Pentrebach</b>
Anthony Hill Court (s/o 2)
Dyffryn Road

## WINTER SERVICE POLICY 2018/19

Hickman Street (Top)
Rhydyfach (by 20)

<b>Penyard</b>
Darren View ( opps 6)
Edwards Close

<b>Penydarren</b>
Billingham Crescent ( Near garages )
Bishps Grove, (Opps 23 )
Caerhenry street, s/o 35
Elim Street, (S/o Norton)
Garden City ( On triangle green)
Hillcrest, (top junction)
Hillcrest, (top junction)
Horeb Close ( Near Horeb chapel )
Lewis Terrace, ( Opps 10 )
Marshall Crescent, (Opps 1 on verge)
Penybryn ( Opps 34 on verge)
Penybryn (On junction to Tenth Avenue)
Penybryn (Opps 68 s/o garage)
Plantation Close, ( S/o 28 )

<b>Penywern</b>
Wern Street to Victoria Street footway

<b>Plymouth</b>
Bro Dawel
David Street
Trevithick Gardens

<b>Pontsticill</b>
Access Rd to St Gwyno (Church Tavern) (½ way down)
Access Rd to St Gwyno (Church Tavern) (Top).
Road to Pontsticill Bridge (½ way down)
Road to Pontsticill Bridge (Bottom)
Road to Pontsticill Bridge (Bus shelter)
U/c Road to Llwyn y Brain (near junction with Ffynon Dwyn Bridge) (East side of River) .
U/c Road to Llwyn y Brain (near junction with Ffynon Dwyn Bridge) (West side of River) .
U/c Road to Pontsticill by Entrance W/Water Filter Beds
Vaynor Rd Pontsticill Entrance to Dan-y-Coed.
Vaynor Rd Pontsticill Opp Junction to Penygarn.

<b>Quakers Yard</b>
Bryngerwyn Avenue (O/S 23/24)
Bryngerwyn Cottages, rear of, outside Community Centre
Caerphilly Road/ Leigh Tce(near Playground)
Fir Tree Drive, No 32 & 50 & Garages
Fir Tree Drive, No 32 & 50 & Garages
Fir Tree Drive, No 32 & 50 & Garages

## WINTER SERVICE POLICY 2018/19

Goitre Coed Rd (Opp Fairview)
Goitre Coed Road (By A470 bridge)
Heather Court
Heol Nant Caiach (by 24)
Pentwyn Deintyr (by ent)
Pentwyn Deintyr (near No.9)
Pentwyn Road
Pentwyn Roundabout (Edwards Tce side)
The Hollies (near 30)
The Hollies (near)
The Oaks (side of 5)
Ty Llwyd Park (side of 54)
Westwood Drive (by hilltop)
Westwood Drive (s/o 12 )
Westwood Drive (Top)
Woodlands Avenue

<b>Swansea Road</b>
Beacon Heights (by entrance)
Entrance to Waunbant Court
Heol Bryn Man
Old Winch Fawr Road (Near entrance)
Old Winch Fawr Road (Near Thornbury)
PenYDuffryn

<b>The Quar</b>
Brooklands Close (Top junction)
Dane Street ( S/o 1)
Junction King Edward St/ Dane Terrace
Llewellyn Street (Opps 22)
Meyrick Villa's, ( O/s 10 )
Miles Street (Opps 8)
Moriah Street
Near Rose and Crown
Park Row Gardens ( O/s 1)
Park Row Gardens ( Top of Street)
Pentwyn Villas ( Near top junction)
Tai Penyard, ( Entrance )
Well Street, (Opps 16)
Westgrove ( S/o 16)

<b>Town Centre</b>
Civic Centre
Civic Centre
Rhydycar Business Park Orbit Business Centre
Rhydycar Business Park Police Station

<b>Trefechan</b>
Beechwood Avenue opp No16 By steps on Verge
Crabtree Walk opp No21 on Verge

## WINTER SERVICE POLICY 2018/19

High Trees By No. 19
High Trees By No.21.
Maple Crescent on Verge Junction Linden Way.
Rowen Rise opp Nursery School on Verge.
Sweetwater Park No. 14
Sweetwater Park No. 35
Sycamore Crescent by No1 on Verge

<b>Treharris</b>
Bro Talwg
Captain Hill
Cardiff Road (Near Ent to Gresham)
Cilhaul (by 19)
Cilhaul (by 46)
Commercial Terrace
Cross Street
Forest Road (s/o 22 Evan St)
Glynbargoed Road (r/o 1 Beechcroft)
Gresham Place (By substation)
Oaklands Terrace (Opp1)
Pantanas
Pritchard Street
Prosser Street
Railway Terrace
The Park (near no.17)
Thomas Street
Thornwood Place (s/o 21)
Twynygarreg – by No. 2
Victoria Street
Williams Terrace (1 opp 9)
Williams Terrace (opp shop)

<b>Trelewis</b>
Cwm Cothi Lane
Maen Gilfach
Stormtown

<b>Troedyrhiw</b>
Angus Street
Ash Road (By pub)
Brynseion
Cardiff Road (By Danyderi Farm Ent)
Fernhill Close (o/s 5)
Harriettown (by 2)
Harriettown (by garden 23)
Haven Close (by 10)
Haven Close (opp 11)
Haven Close (opp 20)
Henry Richard Street (by 1)
Henry Richard Street (by 29)

## WINTER SERVICE POLICY 2018/19

Mount Pleasant
Nant y Coed (O/S 33)
Nant y Coed (O/S 62)
Rear access to Willow Terrace
Taff Trail (Castle Tce and Furnace Row)
Top of Park Place
Windser Street (Opp 21)

<b>Twyn</b>
Kingsly Tec (Side No1 On Grass Verge)
Luther Lane, ( Opps Tree Tops )
Rees Street ( Opps Hampton Street )

<b>Twyncarmel</b>
Twyn Carmel By 126
Twyn Carmel By 271
Twyn Carmel By 283
Twyn Carmel Nr 25
Twyn Carmel On entrance

<b>Ynysfach</b>
Cae'r Wern (Opposite 110)
Cae'r Wern (Opposite 47)
Llwyncelyn Close (Opp Wern Lane)
Penaln View (by 34)
Penderyn Close (Top of hill)
Top of steps to College
Upper Colliers Row
Woodland Walk

Total: 312
------------

## APPENDIX C - Third Party Claims

### Liability for Damage Caused

The County Borough Council is only liable for damage caused where it has been negligent. The County Borough Council can cause damage and not be liable. This is the position when, during the course of carrying out its statutory duty (e.g the clearing of snow), it employs **proper and responsible methods of work and yet unavoidable damage is caused.**

#### Example

An example of this could be piling snow against a wall in circumstances where there really is no practical alternative - if the wall is damaged as a result then it is unlikely that liability lies with the Council. In fact the position is that the Council is liable only where negligence can be proven and that proof has to establish that there was some other way of discharging the duty to clear snow, using the equipment available and having regard to the conditions under which the snow clearing was carried out. The mere fact that snow clearing led to a wall being damaged is not in itself sufficient proof.

### Liability for Consequential Damage Caused

An example of this would be where a fence was breached and as a result a valuable animal escaped onto the highway, was perhaps killed and we are being blamed. This situation is one for which liability may occur; however, this should not be accepted, without full consultation with insurance and legal sections accept any liability for the original damage, which may have resulted in the final incident.

### Duty to Mitigate Loss

A landowner has a duty to mitigate his losses. A situation, which might arise, is:

- a) Landowner wants to turn stock into a field, which he knows has un-repaired fences, which were breached during snow clearing.
- b) He approaches the Highways Manager asking that the damage be made good so that his stock cannot escape etc.
- c) The Highways Manager is unable or unwilling to undertake the repair at the time and tells him so.
- d) If the owner goes ahead and animals do escape then regard will be had to the extent he went to mitigate his loss (e.g by providing a temporary fence).
- e) **If the Highways Manager undertakes some form of temporary repair then this could be construed as admitting liability.**

### Receipt & Processing Claims

- a) Any damage caused to the property of third parties must be reported to the Highways Manager and Insurance Section as soon as practicable, but in any event within two weeks of the end of the weather emergency.

- b) The normal accident damage report should be completed (with photographs if possible - where they will help to deal with the claim) and sent to Insurance Section with the third party's claim - this should always be sought even if it has to be forwarded later. Where a claim is being made for consequential damage, then this must be made very clear. Claims should be boldly marked at the top "Snow Damage" and similarly noted in the register by the Insurance Section at Civic Centre.
- c) It may at this stage be indicated that snow clearing plant was operating in the locality and even agree that it seems likely that damage was caused to the fence. However, the County Borough Council must **NOT** at this time accept that it is liable or has been negligent but can confirm that if it is your opinion that our plant did cause damage then you will report accordingly.
- d) Pending a decision on his claim, the third party shall be made aware of his responsibilities to mitigate any losses he may sustain in the meantime.
- e) Claims relating to matters other than fences, walls etc. (e.g loss of earnings etc.) should be immediately referred to Insurance Section with any relevant comments.



## APPENDIX D - Lists Of Streets/Footways For Whiteout Plan (Including Priorities)

### Drawing No. 1    Zone 1

<b><u>PONTSTICILL</u></b>	<b><u>PRIORITY</u></b>
Ponsticill to Cwmcar Bridge (JCB/ Tractor clearance)	2
Sanatorium Road (JCB/ Tractor clearance)	2
Danycoed Bungalows	1
<b><u>TREFECHAN</u></b>	
The Green (Shopping Area)	1
Rowan Rise (Nursery and all access paths)	1
<b><u>CEFN COED</u></b>	
Cemetery Entrance	1
High Street (Shopping Areas)	1
Cloth Hall Lane (bottom end entrance)	2
Somerset Lane (bottom end entrance)	2
Ysgol Y Graig and access areas	1
Tawelfryn OAP Bungalows	1
New Church Street (Community Centre)	2
Heol y Cae OAP	2
Ty Penderyn Flats	2
White Horse Court	2
Plas Newydd OAP	2
Cefn Coed RFC	2
St John's Church	2
<b><u>THE QUAR</u></b>	
Outside Shops and Pubs on Brecon Road	1
Tabernacle Church, Brecon Road	1
Un-named road at side of Tabernacle Church to Lancaster Street	1
St Mary's Church, Brecon Road	1
Sets of steps down to Riverside Park (4 No.)	1
Park Crescent	2
Sunnybank OAP Bungalows	1
All side Streets to Brecon Road School	1
Abermorlais Terrace & Steps	1
<b><u>GURNOS</u></b>	
Approaches to Hospital	1
Gurnos Shops	1
Gurnos Clinic Car Park and paths	1
Clover Road Shops	1
Pen y Dre School	1
St Aloysius	1
Gurnos Nursery	1
Gurnos Infants	1
Goitre Junior School & paths	1
Clover Road	2
Gurnos Road (Shop Area)	1
Roberts Avenue( Shops Area)	1
Post Office Galon Uchaf Road	1

Drawing No. 2/1   Zone 2 - West

<b><u>TWYNCARMEL</u></b>	
Shop Area	1
Footway Fronting Housing Association Office	1
<b><u>GELLIDEG/ SWANSEA ROAD EST</u></b>	
Gellideg Shops	1
School Accesses	1
Heol Twyn Ddu	2
Heol Llwyn Brain	2
Clwydyfagwr Road	2
<b><u>HEOLGERRIG</u></b>	
Post Office Area	1
Farm Road Shop	1
School Area	1
Six Bells Estate	1
Martins Close	1
Woodlands Way	1
Andrews Close	1
Winchfawr Park	1
<b><u>YNYSFACH</u></b>	
OAP Complex	1
Penlan View	2
Junction areas of Caerwern	2

**Drawing No. 2/2    Zone 2 – Central**

<b><u>TOWN AREA</u></b>	
Upper High Street	1
Glebeland Street	1
Victoria Street	1
John Street	1
Footway link top of John Street to Tramroadside North	1
Pedestrian Areas- High Street, Market Street, Graham Way	1
Footways fronting and rear of Caedraw Schools	1
Swan Street plus road leading to disabled car park	1
Penry and Dynevor Streets	1
Heol SO Davies Shops	1
In and around Kevin Ryan Court OAP Complex	2
College Front	1
Access to footbridge	1
Footpath from College Car Park to Ynysfach	1
British Tip footpath- Castle Car Park to Abermorlais Terrace	1
Footways around Rhydycar Leisure Centre	1
Footway outside Fountain Shops, Lower High Street	1
Masonic Street	2
Alma Street to junction of Queens Road	2
Link from Penyard Road to Dan y Parc	2
Court Street Shops	1
Link to Railway Station	1
<b><u>TWYNYRODYN</u></b>	
Schools and Shops on Twynyrodyn Hill	1
Bryn Street	2
Taff Glen View	2
Greenwood Close	1
Entrance to Trevithick Gardens	2
Link road from Plymouth Street to Annes Close	2
Link road from Plymouth Street to Millbourne Close	2
Post Office area, Glyncoed Terrace	1
<b><u>PENYARD</u></b>	
OAP Complex	1
Footways around Cyfarthfa High School, Cae Mari Dwn	1
Shop on St Tydfil's Avenue	1
Bottom entrance to The Parade	1
Tai Penyard	2

**Drawing No. 2/3    Zone 2 – East**

<b><u>PANT</u></b>	
Pant Road Shops	
Footpaths on Pant Road/Tai yr Efail near Pant Cemetery	1
OAP Complexes	1
Accesses to Pant Primary School	1
Shop Area in Victoria Street	1
Footpath link between Victoria Street and Wern Street	2
<b><u>DOWLAIS</u></b>	
Health Centre	1
Police Station	1
Caeharris Shops, High Street	1
Footpaths around Gwernllwyn School	1
Footpaths around Dowlais Library	2
<b><u>PENYDARREN</u></b>	
Bishop Hedley School Approaches	1
Gellifaelog School Approaches	1
Entrance into Alexander Ave.	1
Entrance into The Avenue	1
Entrance into Penydaren Park	1
OAP Complex in Horeb Close	1
OAP Complex in Plantation Close	1
Link from High St to Church St (Elim Street and Shop)	1
Gwaunfarren School Approaches	1
Entrance to Civic Amenity Site	1

**Drawing No. 3/1    Zone 3 – North**

<b><u>ABERCANAID</u></b>	
Donald and Newton Streets	1
Post Office Area	1
Footpath Link from Cardiff Street to Pentrebach	1
Pond Row	2
Graig Road	2
<b><u>PENTREBACH</u></b>	
Schools on Dyffryn Road	1
Link to Railway Station	1
Chip Shop, Post Office and Shop on Dyffryn Road	1
Link to Duffryn Fawr from Dyffryn Road	2
Hickman Street and Link to Dyffryn Fawr	2
Rhydfach	2
<b><u>TROEDYRHIW</u></b>	
Troedyrhiw Square Shops and Bus Stops	1
Bridge Street (both sides) from Cardiff Road to Pont Rhun Bridge	1
Surgery on Cardiff Road	1
Park Place Link	2
School Bus Park Footways	2
Nant y Coed Splitter Island	2
Cwmdu Road to A470 Viaduct	2
Entrance to Hill Street	2
Angus Street, Diana Street	2
Haven Close and OAP Complex	2
School Street, Chapel Street and Tyntaldwyn Road	2
Bryn Zeion Road	2
Entrance to Henry Richards Street	2
Entrance to road to rear of Fair View Houses	2

**Drawing No. 3/2    Zone 3 –South**

<b><u>ABERFAN</u></b>	
Aberfan Road/Bronheulog Terrace Shops	1
Bridge Street, Cottrell Street Surgery	1
Aberfan Road, junction of Ynysowen Fach to Junction of Pantglas Road	2
Road leading Ynysowen School	1
3 Accesses to Rhydygrug School	1
Hillside Close (Community Centre Entrance)	2
Link Road from Aberfan Road to Coronation Place	2
Cemetery Hill	2
Cross Street Entrance	2
Entrance to Canobie Crescent	2
End of Aberfan Fawr	2
<b><u>MERTHYR VALE</u></b>	
Shop Area Grays Place	1
Alberta Street	2
Sarah Street	2
Argoed Terrace	2
Glyndwr Street	2
Treharne Street	2
Tudor Close, Bells Hill	2
<b><u>MOUNT PLEASANT</u></b>	
Area around Oaklands Garage	1
Area around Mount Pleasant Inn	1
Footpath Link from Darren Las to Cardiff Road	2
Entrance to Darren Las	2

**Drawing No. 4    Zone 4**

<b><u>EDWARDSVILLE</u></b>	
<b>Shops to Cemetery, Cardiff Road</b>	<b>1</b>
<b>Pelican to School Bus Stop</b>	<b>1</b>
Ashgrove	2
Beechgrove	2
Park Lane	2
Petrol Station, Cardiff Road	2
<b><u>TREHARRIS</u></b>	
<b>Perrott/ Fox Street</b>	<b>1</b>
<b>Clinic</b>	<b>1</b>
<b>Cardiff Road plus Bus Turning Area</b>	<b>1</b>
<b>Williams Terrace to Shop</b>	<b>1</b>
<b>OAP Complex</b>	<b>1</b>
<b>Cross Street</b>	<b>1</b>
Adjacent to St Mathias Church (Bargoed Terrace side and The Park side)	2
Gresham Place entrance	2
Windsor Place entrance	2
Winsor Place to Lower Thomas Street then Lower Thomas Street up to Perrott/ Mary Street	2
Evan Street entrance	2
Pritchard Street entrance	2
<b><u>QUAKERS YARD</u></b>	
<b>Roderick's Terrace, Old Cardiff Road to Glantaff Pub</b>	<b>1</b>
Goitre Coed Road up to entrance into Fir Tree Drive and the entrance into Fir Tree Drive	2
Post Office Lane	2
Beddoe Street	2
Leigh Terrace	2
Steps from Tramroad to Fidlers Elbow Roundabout	2
Shop Complex, Nelson Road,A472	2
<b><u>TRELEWIS</u></b>	
<b>Shops and Post Office in High Street</b>	<b>1</b>
<b>Footbridge to School</b>	<b>1</b>
Field Street, Richards Terrace	2
St Mary Street	2
Mackintosh Terrace & road to Community Centre	2
Chip Shop on Gelligaer Road	2
Nant Gwyn Entrance to and around Shop	2
Heol y Glyn	2
Heol Nant Caiach entrance	2
<b><u>BEDLINOG</u></b>	
<b>OAP Complex – George Street</b>	<b>1</b>
<b>Post Office and Shops – Top Square</b>	<b>1</b>
<b>Bedlinog School, Commercial St.</b>	<b>1</b>
Bottom Square (Rugby Club, Bedlinog Inn, Oakland Surgery)	2
Powell Street	2

**AMENDMENT SHEET**

All amendments that are made during the year are to be identified within this Schedule

Issue	Date	Comments	By
1.0	10/11/2015	Winter Service Policy 2015/16 Reviewed and Issued	WMW
1.1	11/10/2016	Winter Service Policy 2016/17 Reviewed and Issued	DC
1.2	09/10/2017	Winter Service Policy 2016/17 Reviewed and Issued	DC
1.3	02/11/2018	Winter Service Policy 2016/17 Reviewed and Issued	DC