

MY REVIEW

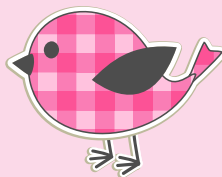


Name :

My Birthday :

Date of my Review :

ALL ABOUT ME



What are you good at?



Have you been, or are you interested in attending any clubs, groups or activities?



Do you have a Lifestory Book or information and photographs of people you know?

USEFUL numbers



Office Number 01685 725000

Advocacy 0808 808 1001

Emergency Duty Team..... 01443 743665

Complaints Officer..... 01685 727034

Children's Commissioner's Office 0179 276 5600



USEFUL INFORMATION



This is a picture of the house where I live



THIS MIGHT HELP YOU:

What is an IRO? This is a person who manages your review.

What is a PEP? Personal Education Plan. It is drawn up with the school to make sure you get the most from your education.

What is a Care Plan? A long term plan about your future.

What is a A & P Record? Action & Progress Record. It is a record of what you are good at and what you need help with.

What is a Health Assessment? It's a description of your health, including a plan of what must be done to help you be as healthy as possible.

What is a Review Meeting? An opportunity to look at your care plan, to see what is going well and what might need to change.

What is Contact? This is when you get to see family and other people who are important to you.

What is an Advocate? This is a person who does not work for the council, who can speak for you.

If you would like to make a complaint, you can contact your Social Worker, Reviewing Officer, Advocate or an adult, such as your Carer or Teacher.

The following people live in the house with me

- 1.
- 2.
- 3.
- 4.
- 5.
- 6.
- 7.

Do you know why you live here?

Yes

No

EDUCATION



Are you happy in school?

Is there anything about school you are worried about?

Do you have access to books, computers and other things you need?



Always



Most of the time



Never



Do you get to go on school trips and outings with your school friends?



Always

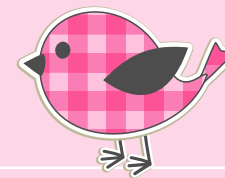


Most of the time



Never

LISTENING TO ME



Do you have someone to talk to?



Always



Most of the time



Never

Do you see your Social Worker enough?



Always



Most of the time



Never



If I cannot attend my review, this is what I'd like to say...



Would you like to see the person who manages your review (IRO)?

Yes

No

Do you know what an advocate is?

Yes

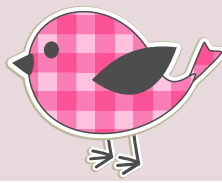
No

Do you want to see them?

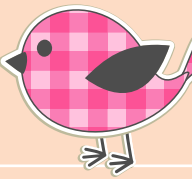
Yes

No

DAY TO DAY LIFE



HEALTH AND HAPPINESS



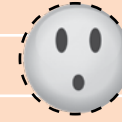
Are you happy with :

- Your Pocket Money Always Most of the time Never
- Your clothes Always Most of the time Never
- Your food Always Most of the time Never
- The House Rules Always Most of the time Never

Do you have any worries about your health?



Always



Sometimes



Never



Do you get along with the people you live with?



Always



Most of the time



Never



Who can help you with your health?

Do you have your own things/belongings with you?



Always



Most of the time



Never



What makes you happy about yourself?



Have you been on holidays or trips?



Always



Most of the time



Never



What makes you sad about yourself?





Family and friends

Do you see your friends enough?



Always



Most of the time



Never

Do they come to your house to play/for tea?



Always



Sometimes



Never

This is a picture of me and my friends



I have put a circle around the people that I see

Grandma

Grandad

Mum

Dad

Sister

Brother

Aunty

Uncle

Cousins

Stepsister

Stepbrother

Stepmum

Stepdad

Half Brother

Half Sister

I also see the following people :

I would also like to see the following people :

